

- Whytes Gully Waste Depot is not permitted to accept builder's wastes for landfill disposal including mixed soils, concrete, bricks, tiles, plasterboard, wood waste and general mixed builders waste. This waste is accepted at Cleary Brothers builder's tip at Port Kembla.
- Helensburgh Waste Depot is not permitted to accept any putrescible waste for landfill disposal including wastes containing food or organic material. Garden waste is accepted for recycling only and not for landfill disposal.
- Asbestos and commercial amounts of polystyrene material are not accepted at Whytes Gully or Helensburgh Waste Depots. For information on approved asbestos disposal sites contact the Office of Environment and Heritage on (02) 9995 5000.

Collection Services

Residents receive a three bin kerbside service within the waste management charge in their rates. Council's 'user pays' approach allows residents to choose the size of their red-lid general waste bin in line with their individual needs.*

| Bin size | Charge |
|----------------------------------------------------------------|-----------|
| 80 litre General Waste bin, Recycling bin and Green Waste bin | \$270 p.a |
| 120 litre General Waste bin, Recycling bin and Green Waste bin | \$352 p.a |
| 240 litre General Waste bin, Recycling bin and Green Waste bin | \$579 p.a |

If a resident requires additional bins, they can obtain these subject to conditions.*

| Additional Bin type | Charge |
|------------------------------------------------------------------------|-------------|
| Additional 80 litre General Waste bin | \$124 p.a |
| Additional 120 litre General Waste bin | \$166 p.a |
| Additional 240 litre General Waste bin | \$228 p.a |
| Additional 240 litre Recycling bin for domestic or business premises | \$83.50 p.a |
| Additional 240 litre Green Waste bin for domestic or business premises | \$83.50 p.a |

Businesses can also obtain recycling and green waste bins (subject to the service physically being able to be provided at the specific premises).

*Only the property owner is authorised to make a request. The revised waste collection service charge will be applied to the rates of the property owner. To get a change of bin size or an additional bin, please contact Council.

Reduce the contents of your red top garbage bin by reusing your food and garden waste. Set up a compost or worm farm today.

Find out how by contacting Council's Green Team on 4227 7105.

| | |
|--------------|---------------|
| Compost bins | \$37 per item |
| Worm farm | \$79 per item |

Compost bins and worm farms are available for sale at the Botanic Gardens Green Plan Sale.

Green Waste & Free Mulch

Council encourages residents and businesses to bring their bulky green waste to Whytes Gully or Helensburgh waste disposal depots for recycling. All garden waste is required to be separated and deposited to the green waste processing area. It is then turned into mulch, compost and soil products.

Raw mulch is available to Wollongong Council residents free of charge. Council cannot guarantee that it will be weed free. It is recommended that the mulch be stored for six weeks before use.

Items that CAN be mulched include branches, fence palings, logs no greater than 150mm in diameter, leaves, brush, palm fronds, lawn clippings and cuttings.

Items that CANNOT be mulched include: timber with bolts or nails; noxious weeds; treated and painted timber.

Location OF WASTE DISPOSAL DEPOTS

Whytes Gully Reddalls Road, Kembla Grange
Helensburgh Nixon Place, Helensburgh
Enquiries 4227 7111
 Monday to Friday, 8:30am to 5pm

Hours OF OPERATION

| | WHYTES GULLY | HELENSBURGH |
|-----------------|------------------|-------------|
| Weekdays | 7:30am to 4:30pm | 8am to 4pm |
| Weekends | 8am to 4pm | 9am to 1pm |
| Public Holidays | 8am to 4pm | 8am to 4pm |
| Good Friday | 8am to 4pm | Closed |
| Christmas Day | Closed | Closed |

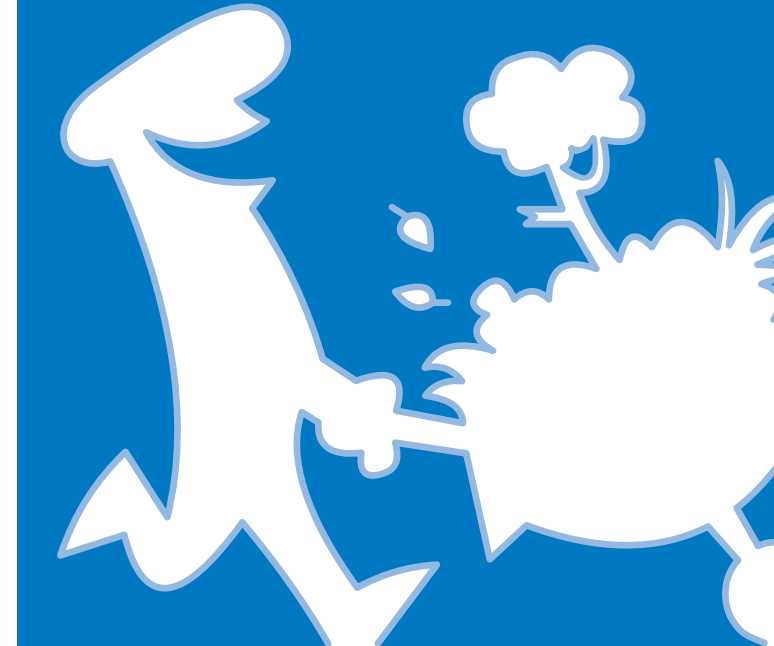
Effective as of July 2011.

Payment OPTIONS

Council's Waste Disposal Depots accept cash, EFTPOS cards and credit cards only. Cheques are not accepted.

Businesses can establish credit accounts on commercial terms and conditions. Business credit account payments are not accepted at our Waste Disposal Depots.

Sort your waste and save



Waste Management

FEES & CHARGES 2011-12

Turning Waste into Resources

Waste Depots

Council's Waste Depot fees and charges are designed to minimise waste to landfill and encourage materials separation and resource recovery. The more you sort your waste to separate recyclables, the more you will save on landfill disposal costs and help the environment. Charges are mass based per tonne, unless a minimum charge or charge per specified item is indicated.

Waste to landfill charges includes the Waste Levy charge of \$78.60 per tonne which is required to be paid to the NSW State Government.

Household Waste

| Material | Charge | Depot |
|---------------------------------------------------------------|---------------------|-------|
| Mixed General Waste | | |
| Minimum charge (loads less than 100kg) – Pensioners exempt | \$ 21.00* | Both |
| Loads 100kg or more | \$ 212.50 per tonne | Both |

Garden and Wood Waste

| | | |
|---------------------------------------------------------------|--------------------|------|
| Minimum charge (loads less than 100kg) – Pensioners exempt | \$8.00* | Both |
| Loads 100kg or more | \$ 81.00 per tonne | Both |

Waste Charges per Specified Item

The following items can also be included in the Household Cleanup Service – visit Council's website to book two collections per financial year per residential block.

| | | |
|--------------------------|------------------|------|
| Mattresses | \$23.00 per item | Both |
| Car and 4WD tyres (each) | \$5.50 per item | Both |

Special Note: Charities are not exempt from specified items

Computers

| | | |
|-----------------------------------|------------------|------|
| Combined terminal & monitor (set) | \$42.00 | Both |
| Monitors | \$26.00 per item | Both |
| Computer terminals | \$16.00 per item | Both |

Televisions

| | | |
|-------------------|------------------|------|
| Small | \$32.00 per item | Both |
| Large (over 60cm) | \$42.00 per item | Both |

Commercial & Business Waste

| Material | Charge | Depot |
|----------------------------------------|--------------------|-------|
| Mixed General Waste | | |
| Minimum charge (loads less than 200kg) | \$42.00* | Both |
| Loads 200kg or more | \$212.50 per tonne | Both |

Tyres

| | | |
|--------------------------------------|--------------------|------|
| Minimum charge (less than 0.4 tonne) | \$97.50* | Both |
| Loads 0.4 tonne or more | \$246.80 per tonne | Both |

Garden and Wood Waste

| | | |
|----------------------------------------|-------------------|------|
| Minimum charge (loads less than 200kg) | \$16.00* | Both |
| Loads 200kg or more | \$81.00 per tonne | Both |

*These charges are under review and will be revised in September 2011

Special Waste Disposal

| Material | Charge | Depot |
|----------------------------------------|--------------------|-------|
| Special Waste – Commercial ONLY | \$246.80 per tonne | Both |

Asbestos material and commercial amounts of polystyrene not accepted at Whytes Gully or Helensburgh Waste Depots. All special waste must be classified and permitted to enter a General Solid Waste Landfill under the NSW Waste Classification Guidelines.

Dead Animals – Domestic and Commercial

| | | |
|-----------------------------------|----------------|--------------|
| Small size animals (dog/cat) | \$16 per item | Whytes Gully |
| Medium size animals (sheep/goat) | \$68 per item | Whytes Gully |
| Large size animals (cattle/horse) | \$144 per item | Whytes Gully |
| Animals disposed of by RSPCA | No charge | Whytes Gully |

Recyclable Materials (free)

| Material | Depot |
|------------------------------------------------------------|--------------|
| Commingle/mixed recyclables | Both |
| Glass bottles | Both |
| Paper and cardboard | Both |
| Mobile phones | Both |
| Batteries (household or car) | Both |
| Scrap metal (white goods, steel, brass, aluminium, copper) | Both |
| Gas bottles & fire extinguishers | Whytes Gully |
| **Waste oil (eg. sump oil, engine, lubricating oils) | Both |
| Revolve/reusables | Whytes Gully |

** Fuel, petrol, diesel, heater oil, thinners or cooking oils are not accepted at Council's waste depots.

Revolve

- Reusable items in good working order are accepted including furniture, sporting and camping goods, toys, clothes, blankets and linen, rugs, books, cutlery & crockery, lawn mowers, tools, washing machines, driers, fridges and building materials (eg. wood, doors, windows, baths, etc).
- Items such as computers, televisions, mattresses, tyres and other electrical items, paint or household chemicals are not accepted.
- Reusable items must be in reasonable condition and/or in working order to enable resale. Items that are soiled, damaged or not working will be refused at Revolve's/Council's discretion and shall be required to be disposed of as general waste with fees and charges applying.

Special Notes

- Commercial or business waste not accepted as household waste, as assessed by Weighbridge Operator(s);
- Garden/green waste is not accepted to landfill and must be separated from mixed general waste and be free of contamination for depositing in garden waste recycling drop off area. No treated (eg. CCA), painted or manufactured wood products (eg. MDF) accepted as garden/green or wood waste.
- Specified items are required to be deposited in recycling areas prior to mixed general waste being deposited for disposal. Failure of site users to follow directions may result in specified item(s) weights being included in mixed general waste charges.