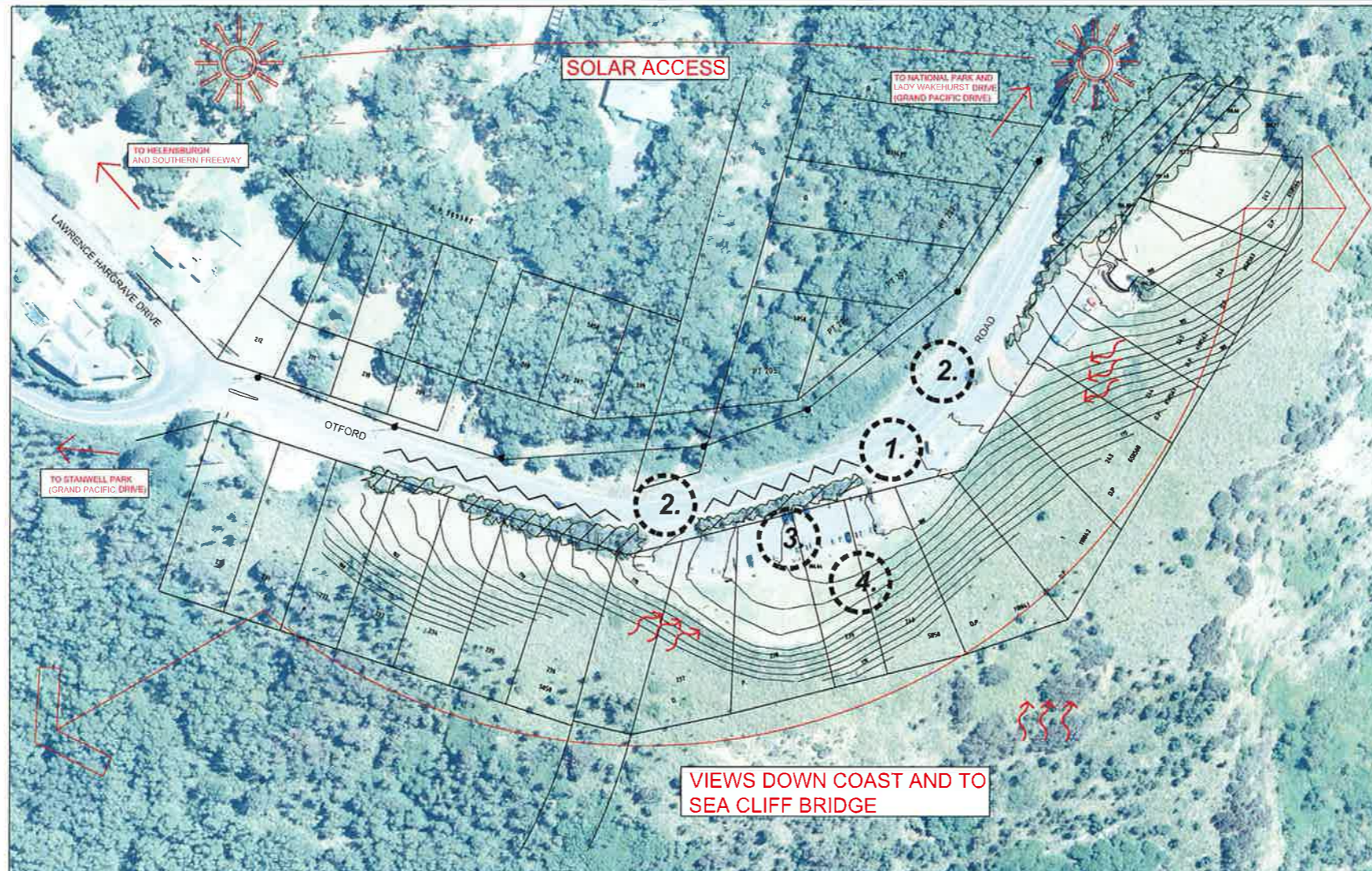


LEGEND

- EXISTING CONTOURS
- EXISTING POWER POLE AND OVERHEAD LINES
- PLAN OF MANAGEMENT BOUNDARY
- EXISTING VEGETATION
- PREVAILING BREEZES
- VISUAL BARRIER CREATED BY EXISTING VEGETATION
- 1. MAJOR CONFLICTS - REFER NOTES BELOW

MAJOR CONFLICTS

1. EXISTING BOUNDARY LINE - WCC ASSETS ARE SITUATED ON RTA LAND
2. TRAFFIC CONFLICTS - ENTRY AND EXITS ARE NOT CLEARLY DEFINED CREATING CONFUSION FOR VEHICLES
3. INSUFFICIENT PARKING FOR BUSES AND LARGER VEHICLE
4. INTERFACE OF GLIDING TAKE OFF AND LANDING AREAS WITH PEDESTRIAN ZONES CAN CREATE PEDESTRIAN MOVEMENT CONFLICT



PLAN OF MANAGEMENT OBJECTIVES

(ADOPTED BY COUNCIL 4 AUGUST 2009)

BALD HILL IS COMMUNITY LAND CATEGORISED AS "CULTURALLY SIGNIFICANT" AND "NATURAL AREA" IN ACCORDANCE WITH THE LOCAL GOVERNMENT ACT 1993.

- THE CORE OBJECTIVES OF COMMUNITY LAND CATEGORISED "CULTURALLY SIGNIFICANT" ARE :
- TO RETAIN AND ENHANCE THE CULTURAL SIGNIFICANCE OF THE AREA (NAMELY ITS ABORIGINAL, AESTHETIC, ARCHAEOLOGICAL, HISTORICAL, TECHNICAL OR RESEARCH OR SOCIAL SIGNIFICANCE) FOR PAST, PRESENT OR FUTURE GENERATIONS BY THE ACTIVE USE OF CONSERVATION METHODS. THOSE CONSERVATION METHODS MAY INCLUDE ANY OR ALL OF THE FOLLOWING METHODS:
 - THE CONTINUOUS PROTECTIVE CARE AND MAINTENANCE OF THE PHYSICAL MATERIAL OF THE LAND OR OF THE CONTEXT AND SETTING OF THE AREA OF CULTURAL SIGNIFICANCE,
 - THE RESTORATION OF THE LAND, THAT IS, THE RETURNING OF THE EXISTING PHYSICAL MATERIAL OF THE LAND TO A KNOWN EARLIER STATE BY REMOVING ACCRETIONS OR BY REASSEMBLING EXISTING COMPONENTS WITHOUT THE INTRODUCTION OF NEW MATERIAL,
 - THE RECONSTRUCTION OF THE LAND, THAT IS, THE RETURNING OF THE LAND AS NEARLY AS POSSIBLE TO A KNOWN EARLIER STATE,
 - THE ADAPTIVE REUSE OF THE LAND, THAT IS, THE ENHANCEMENT OR REINFORCEMENT OF THE CULTURAL SIGNIFICANCE OF THE LAND BY THE INTRODUCTION OF SYMPATHETIC ALTERATIONS OR ADDITIONS TO ALLOW COMPATIBLE USES (THAT IS, USES THAT INVOLVE NO CHANGES TO THE CULTURAL SIGNIFICANCE OF THE PHYSICAL MATERIAL OF THE AREA, OR USES THAT INVOLVE CHANGES THAT ARE SUBSTANTIALLY REVERSIBLE OR CHANGES THAT REQUIRE A MINIMUM IMPACT),
 - THE PRESERVATION OF THE LAND, THAT IS, THE MAINTENANCE OF THE PHYSICAL MATERIAL OF THE LAND IN ITS EXISTING STATE AND THE RETARDATION OF DETERIORATION OF THE LAND.

- THE CORE OBJECTIVES OF COMMUNITY LAND CATEGORISED "NATURAL AREA" ARE :
- TO CONSERVE BIODIVERSITY AND MAINTAIN ECOSYSTEM FUNCTION IN RESPECT OF THE LAND, OR THE FEATURE OR HABITAT IN RESPECT OF WHICH THE LAND IS CATEGORISED AS A NATURAL AREA, AND
 - TO MAINTAIN THE LAND, OR THAT FEATURE OR HABITAT, IN ITS NATURAL STATE AND SETTING, AND
 - TO PROVIDE FOR THE RESTORATION AND REGENERATION OF THE LAND, AND
 - TO PROVIDE FOR COMMUNITY USE OF AND ACCESS TO THE LAND IN SUCH A MANNER AS WILL MINIMISE AND MITIGATE ANY DISTURBANCE CAUSED BY HUMAN INTRUSION, AND
 - TO ASSIST IN AND FACILITATE THE IMPLEMENTATION OF ANY PROVISIONS RESTRICTING THE USE AND MANAGEMENT OF THE LAND THAT ARE SET OUT IN A RECOVERY PLAN OR THREAT ABATEMENT PLAN PREPARED UNDER THE THREATENED SPECIES CONSERVATION ACT 1995 OR THE FISHERIES MANAGEMENT ACT 1994.

KEY VALUES STATEMENT FOR THE SITE:

- BALD HILL IS VALUED AS A VANTAGE POINT OF WORLD WIDE POPULARITY WHERE THE BREATHTAKING SCENIC ENVIRONMENTAL BEAUTY OF THE BUSH, CLIFFS AND SEA INTERSECT WITH HUMAN INGENUITY, BE THAT WITH AERONAUTICS (HANG GLIDING, PARAGLIDING, LAWRENCE HARGRAVE EXPERIMENTS) AND ENGINEERING (SEA CLIFF BRIDGE)

OPPORTUNITIES

- UNIQUE LOCATION AND SPECTACULAR VIEWS
- HERITAGE SIGNIFICANCE
- IMPROVE TOURIST EXPERIENCE
- IMPROVE SITE FURNITURE
- PROVIDE INTERPRETIVE SIGNAGE
- IMPLEMENT NEW SITE FACILITIES - KIOSK, AMENITIES
- IMPROVE ENTRANCE TO SITE
- CONVERT EXISTING TOILETS TO STORAGE FOR HANG GLIDERS/PARA GLIDERS
- IMPROVE ACCESS TO SITE
- IMPROVE SITE PARKING AND TRAFFIC MOVEMENTS

CONSTRAINTS

- CLIFF EDGE AND SITE SLOPE
- LIMITED SITE SPACE DUE TO NARROW SITE AREA
- ENVIRONMENTAL FACTORS - WIND, SUN EXPOSURE
- RESTRICTED PARKING SPACES
- INADEQUATE AMENITIES
- EXISTING VEGETATION BLOCKS VISUAL CONNECTION TO SITE
- REMOTE SITE - LIMITED SURVEILLANCE
- LIMITED RESOURCES FOR MAINTENANCE
- LIMITED RESOURCES FOR DEVELOPMENT/UPGRADE

RECREATION FUNCTIONS

BALD HILL CURRENTLY HOSTS SEVERAL RECREATIONAL AND TOURISM ACTIVITIES, THE FOLLOWING GROUPS UTILISE THE SITE ON A REGULAR BASIS:

- STANWELL PARK HANG GLIDING AND PARAGLIDING CLUB
- BUSH WALKING
- CYCLISTS
- MOTORBIKE TOURS
- BUS TOUR GROUPS
- RECREATIONAL TOURISTS
- SELF DRIVE TOUR CARS
- ICECREAM / SNACK VAN

SITE ANALYSIS
1:1000



MAGNIFICENT COASTAL VIEWS OF THE ILLAWARRA

POORLY SITED SITE SIGNAGE AND INTERPRETIVE ELEMENTS



LAWRENCE HARGRAVE'S TRIBUTE SCULPTURE



HANG GLIDING CLUB SIGNAGE



GRAND PACIFIC DRIVE SIGNAGE



OBSCURE SITE ENTRY



TOURIST OPERATORS ADVERTISING

EXISTING SITE FURNITURE AND INFRASTRUCTURE IN POOR CONDITION



REFURBISHMENT REQUIRED



DATED PAVING



ROTTED TIMBER



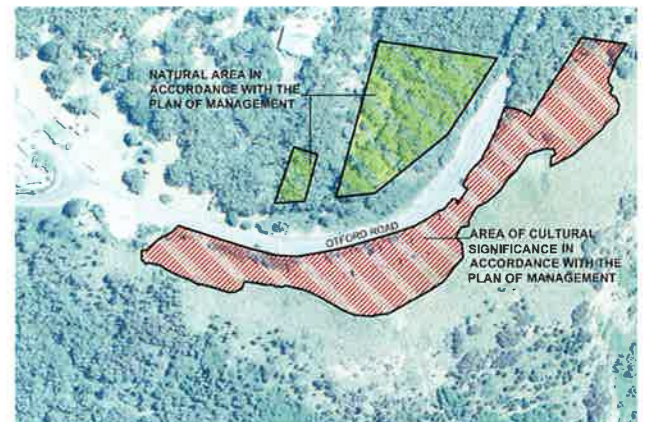
GRAFFITI



DATED STREET FURNITURE



FAILING PAVEMENT



PLAN OF MANAGEMENT - ZONING NTS