

WOLLONGONG CITY COUNCIL

# Traffic Committee Agenda

10 September  
2024



**TUESDAY 10 SEPTEMBER 2024**  
9.15 AM

#### PURPOSE OF MEETING

**The City of Wollongong Traffic Committee** is not a Committee of Wollongong City Council however a Technical Committee of Transport for NSW (TfNSW). The Committee operates under the authority conferred to Council by TfNSW under the Transport Administration Act 1988. Council has resolved to manage the Traffic Committee under a Charter which sets out the membership, timelines for the preparation of the Agenda and the distribution of Minutes, in accordance with TfNSW (previously RMS) document 'A guide to the delegation to councils for the regulation of traffic' (including the operation of Traffic Committees).

Council has been delegated certain powers, from TfNSW, regarding traffic matters upon its local roads. A condition of this delegation is that the General Manager will approve the minutes under delegated authority.

**There are four permanent members of the Traffic Committee, *each of whom has a single vote only.***

- The members are representatives of the NSW Police Force, Transport for NSW, the Local State Member of Parliament (for the location of the issue to be voted upon), and a representative of Wollongong City Council.
- If TfNSW or NSW Police Force disagrees with any Traffic Committee recommendation, that member may lodge an appeal with the Regional Traffic Committee for determination. The appeal must be lodged in writing within 14 days of the Minutes being published on the Council's website. Any action relative to any issue under appeal must cease until the matter is determined. The Regional Traffic Committee is chaired by an independent chairperson and submissions and representations are welcomed from all interested parties.



# INDEX

ITEM	PAGE NO.
1	STANDING AGENDA ITEMS .....4
1.1	Welcome .....4
1.2	Acknowledgement of Country .....4
1.3	Declarations of Interest .....4
1.4	Apologies .....4
1.5	Confirmation of Minutes Arising from Previous Minutes .....4
1.6	Business Arising from Previous Meeting .....4
2	GENERAL BUSINESS .....5
2.1	SCARBOROUGH, Railway Terrace – Ward 1 – Heathcote Electorate – Proposed Sign and Line Plan .....5
2.2	FAIRY MEADOW, Meadow Street – Ward 1 – Keira Electorate – Timed Bus Zone .....9
2.3	WOLLONGONG, Smith Street – Ward 2 – Wollongong Electorate – Chevron Areas and No Parking Zones .....11
2.4	EAST CORRIMAL, Murray Road – Ward 1 – Wollongong Electorate – Traffic Calming .....18
3	REGULATION OF TRAFFIC .....21
3.1	OTFORD to WOLLONGONG, Various Locations – Ward 1 and 2 – Heathcote, Keira and Wollongong Electorate – MS Gong Ride (Class 1) .....21
4	UPDATE TO PREVIOUSLY APPROVED ITEMS .....23
4.1	STREAM HILL, Darkes Road – Ward 3 – Keira Electorate – Construction of Roundabout .....23
5	NOTIFICATION UNDER TEMPORARY DELEGATIONS (FOR INFORMATION ONLY) .....31
5.1	WOLLONGONG, Auburn Street – Ward 2 – Wollongong Electorate – Timed No Parking Zone .....31
5.2	WOLLONGONG, Crana Place – Ward 2 – Wollongong Electorate – No Parking Zone .....33
5.3	HELENSBURGH, Parkes Street – Ward 1 – Heathcote Electorate – No Stopping .....35
6	DESIGN MATTERS .....37
6.1	THIRROUL, Phillip Street – Ward 1 – Raised Pedestrian Priority Crossing (Wombat) .....37
7	DEVELOPMENT MATTERS .....40
7.1	WARRAWONG, Jackson Avenue – Ward 3 – Wollongong Electorate - Proposed Speed Table (raised) .....40

## 1 STANDING AGENDA ITEMS

### 1.1 Welcome

### 1.2 Acknowledgement of Country

*"We pay our respects to and acknowledge the traditional custodians of Dharawal Country, the land on which we meet, and pay our respects to Elders past, present and those emerging. We also extend our respects to Aboriginal and Torres Strait Islander people present here today."*

### 1.3 Declarations of Interest

### 1.4 Apologies

### 1.5 Confirmation of Minutes Arising from Previous Minutes

### 1.6 Business Arising from Previous Meeting

## 2 GENERAL BUSINESS

### 2.1 SCARBOROUGH, Railway Terrace – Ward 1 – Heathcote Electorate – Proposed Sign and Line Plan

#### BACKGROUND

Council have investigated concerns in relation to the bollard at Railway Terrace, Scarborough. The concerns were due to vehicles parking to the northern side of the bollard (which predates 2007) which were reported as causing access difficulties to private property.

Council completed community consultation in late 2023 and again in March 2024 following the concerns raised of parking near the bollards on Railway Terrace, Scarborough. The March 2024 consultation period included consultation with residents, emergency services, and waste collection services.

Of the responses received, key themes of the feedback received included the following:

- The bollard removal was not supported by most of the residents.
- Emergency Services advised that the bollards did not create emergency service access issues as long as the bollards were removable and parking either side of the bollard was kept clear.
- Remondis provided feedback that the current waste collection practice to reverse the waste collection vehicles has been done for many years and that the removal of the bollards would create issues for waste servicing in the area noting the tight bend near the southern access to Railway Terrace.
- Road safety concerns were raised if parking was removed either side of the bollard (drivers not being aware of the presence of the bollards and grade meaning bollards may not be seen).

Noting the above, Council proposes to install:

- C3/NS1 No Stopping Lines either side of the bollards to keep the area clear (emergency services requirements).
- Reflective tape on the bollards to increase reflectivity of the bollards at night.
- 1x speed cushion (and speed cushion signage) on the approach to the bollards at a location near an existing streetlight (which has been assessed as compliant).
- Additional warning (Road Ends) and No Through Road signs to reduce the probability of a collision with the bollards.

#### CONSULTATION

Two rounds of consultation were completed in late 2023 and again in March 2024. Consultation included residents, emergency services (NSW Police, Fire NSW and Ambulance NSW), waste collection services and Transport for NSW representatives.

The community were largely opposed to any change however noting the access and egress concerns as well as the feedback from emergency/waste services, Council propose to proceed with installation.

A notification letter was sent to residents prior to the Traffic Committee. Feedback from residents with concerns are listed below along with Councils response to these items.

- Chevron lines being slippery  
The most recent plan sent to residents proposed chevron linemarking either side of the bollard. Community raised concerns of slipping and, whilst Council was intending to install non-slip chevron linemarking, Council have removed the chevron linemarking to eliminate this risk and updated the plans from those sent out to the community.
- Concerns of speeding vehicles and speed hump creating a 'launching pad'  
Customers have raised concerns that the speed cushion proposed will create a 'launching pad' for speeding drivers. The existing narrow road widths (4-5m in sections) creates a constrained environment which assists in keeping speeds low. Council has proposed the installation of a speed cushion to reduce vehicle speeds on approach to the bollard and warning signs on approach to the bollard are proposed to raise awareness of the speed cushion presence and end of the road. Additional "no through road" signs will be placed at the entry to the road. With these measures in place, Council have determined that the speed cushion improves road safety and the likelihood of a speeding driver reaching a speed capable of launching off the speed cushion is low.
- Request to upgrade the bollard and concerns with community members removing the bollard  
The bollard has been in place for many years and is an existing condition. The risk of a community member removing the bollard will not increase with the new proposal. Should the community sight illegal removal of the bollards, Council should be notified immediately. Notwithstanding, Council has placed this location on its infrastructure request list for a new bollard and the upgrade will be prioritised against other infrastructure delivery projects across the Wollongong LGA.

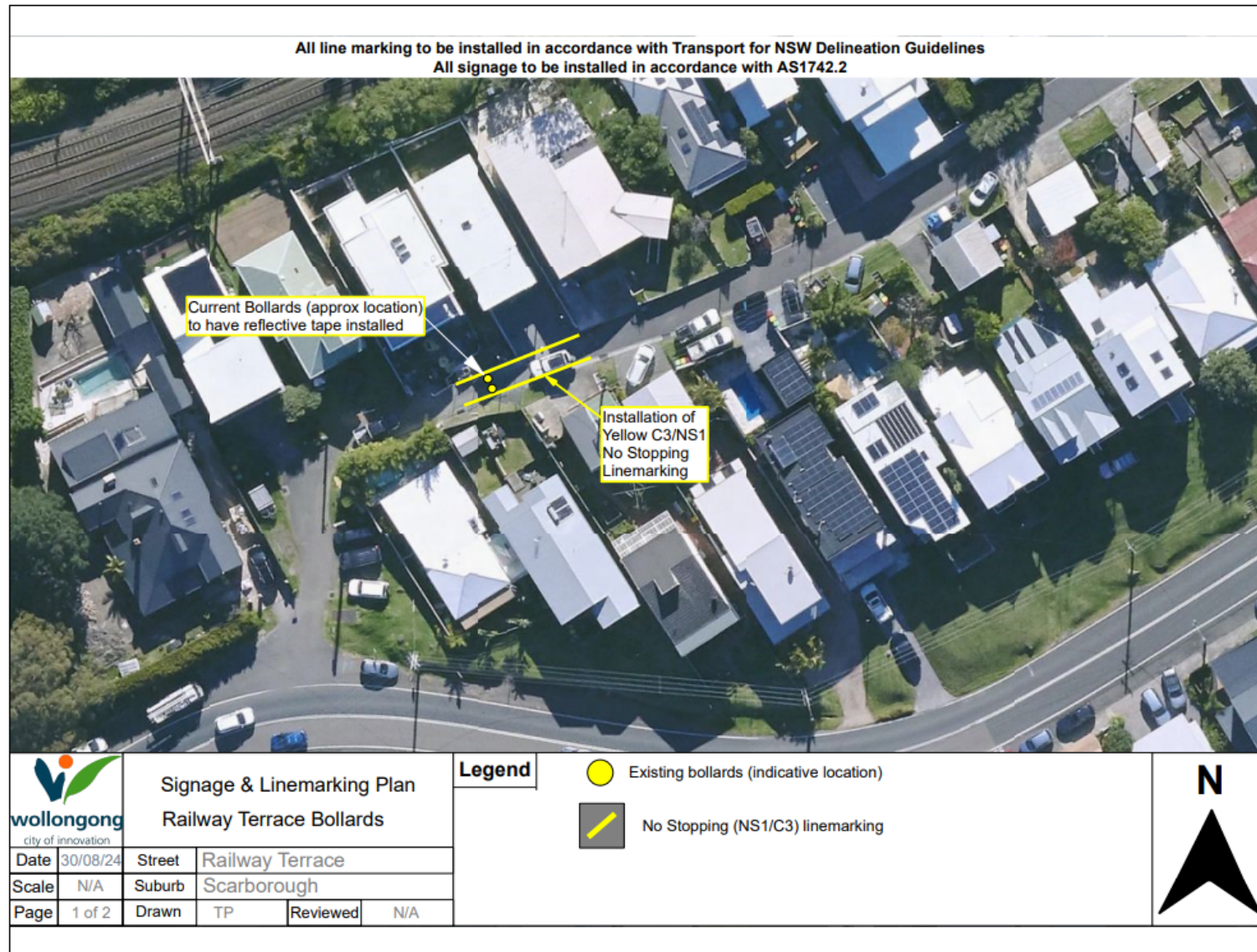
- Location of the speed cushion making access difficult  
The cushion was proposed following communities' concerns with a vehicle colliding with the bollard. The location of the speed cushion was selected close to existing lighting (reduce the need for lighting upgrades) and positioned on approach to the bollard to reduce crash risk with the bollard. Noting the narrow widths and road environment, the current cushion location is deemed suitable. Any alternative location away from the existing lighting source would either require lighting upgrades or push 'access difficulty concerns' to another location. It is noted that Council has supported the relocation of the proposed cushion slightly (relocated south of the services pit) following customer feedback from the community notification plan. See Page 2 of the plans for details for changes made.
- Request for Elsholz kerb to protect properties from errant vehicles  
Elsholz kerb is not a standard kerb design for residential streets and is not supported for installation at this location

#### PROPOSAL

The attached plan be approved.

Item 2.1 - SCARBOROUGH, Railway Terrace – Proposed Sign and Line Plan – Page 1 of 2

www.invarion.com












Item 2.1 - SCARBOROUGH, Railway Terrace – Proposed Sign and Line Plan – Page 2 of 2

All line marking to be installed in accordance with Transport for NSW Delineation Guidelines  
All signage to be installed in accordance with AS1742.2



 <b>wollongong</b> city of innovation		Signage & Linemarking Plan Railway Terrace Bollards				<b>Legend</b>				
Date	3/09/24	Street	Railway Terrace				Road Ends (W5-18A)			Speed hump Ahead (W3-4A)
Scale	N/A	Suburb	Scarborough				Distance Plate sign - 100m (W8-5A)			Speed Hump (W5-10A)
Page	2 of 2	Drawn	TP	Reviewed	N/A		No Through Road (G9-18A)			



## 2.2 FAIRY MEADOW, Meadow Street – Ward 1 – Keira Electorate – Timed Bus Zone

### BACKGROUND

Council has reviewed concerns over bus stop visibility, the short Bus Zone length, and bus access difficulties due to parked vehicles at the bus stop in front of No. 158 Meadow Street, Fairy Meadow. The existing bus zone is only 10 meters long, but the standard bus zone length is 30 meters to provide ample space for buses to draw in and draw out. This allows bus drivers can't safely pick-up and drop-off patrons at this location.

It is proposed to extend the existing Bus Zone to span between the driveways of No. 158 and Non. 160 to assist bus drivers in loading/unloading and deter illegal parking. Bus Zone is to be timed from 7am to 7pm Monday to Saturday to allow parking outside these hours.

### CONSULTATION

Consultation has occurred prior to the Local Traffic Committee. Council did not receive any feedback.

### PROPOSAL

The attached plan be approved.

DRAFT

Item 2.2 – FAIRY MEADOW, Meadow Street – Timed Bus Zone Signs

www.invarion.com



## 2.3 WOLLONGONG, Smith Street – Ward 2 – Wollongong Electorate – Chevron Areas and No Parking Zones

### BACKGROUND

Council completed a community survey as part of ongoing engagement with adjacent residents and users of the Smith Street, Wollongong pop-up cycleway. One of the main pieces of feedback received in the survey as well as earlier feedback was that visibility needs to be improved between drivers accessing properties and cyclists in the cycleway as well as traffic on Smith Street.

Council proposes to remove one to two on-street parking spaces adjacent to various driveways on the south side of Smith Street to enhance visibility where there are significant movements across the cycleway and/or the length of street parking adjacent to the driveway creates a significant visual obstruction.

The removal of parking is proposed to be primarily by the use of chevron markings on the road pavement. A No Parking restriction is also proposed on both sides of the driveway to Wollongong Public School to avoid reducing the School's pickup and drop off capacity.

### CONSULTATION

Consultation has occurred with the fronting properties where the chevron areas and No Parking zones are proposed. Minor adjustments were made to the proposal in response to community feedback received. Chevrons within an existing No Parking zone beside the driveway to The Belmore Apartments Hotel were added to improve compliance. Some chevrons were also removed beside a couple of driveways with reasonable visibility and lower movements compared to the rest of the proposal.

### PROPOSAL

The attached plan be approved.

DRAFT

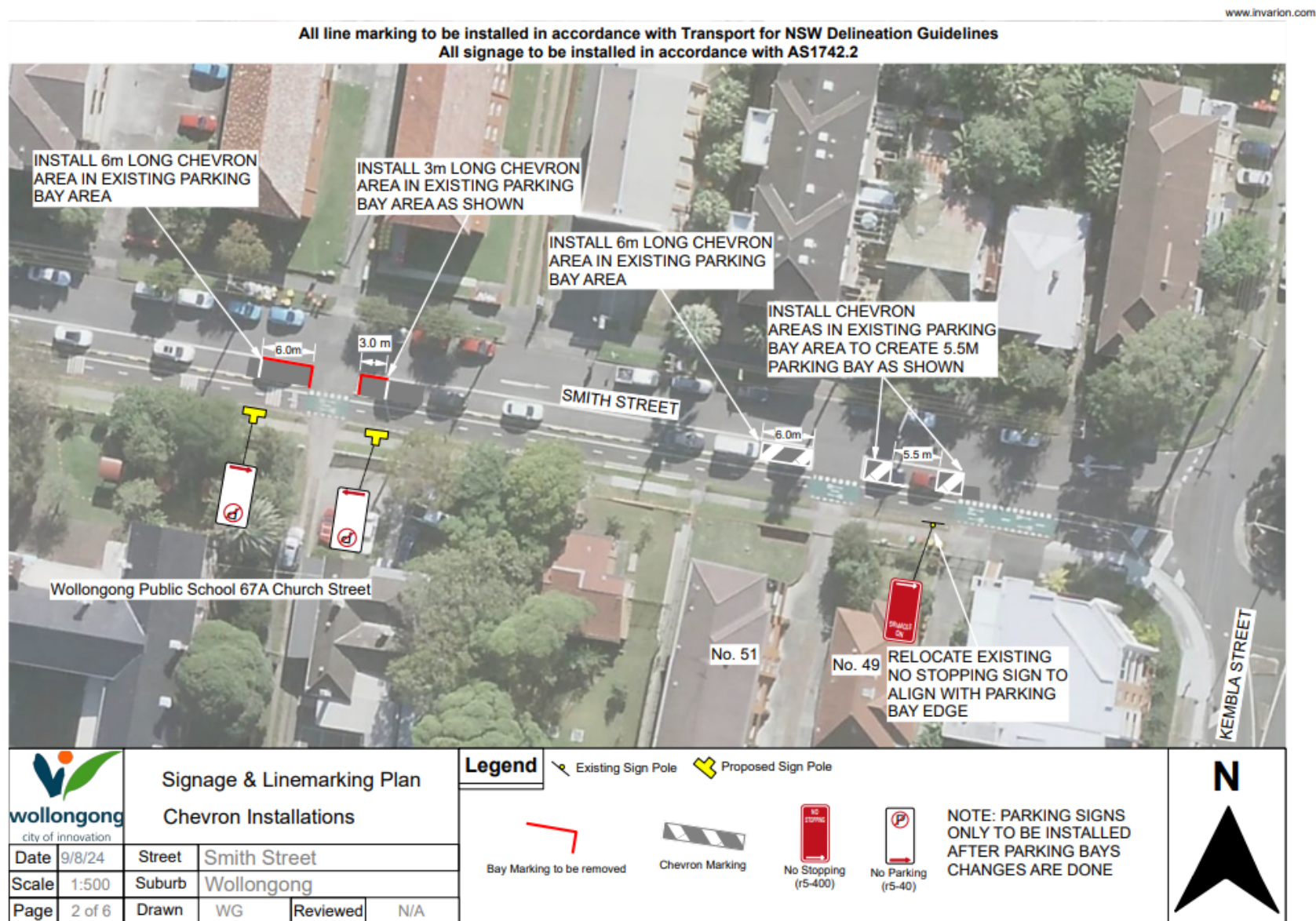


Item 2.3 - Wollongong, Smith Street – Chevron Areas and No Parking Zones – Page 1 of 6

www.invarion.com

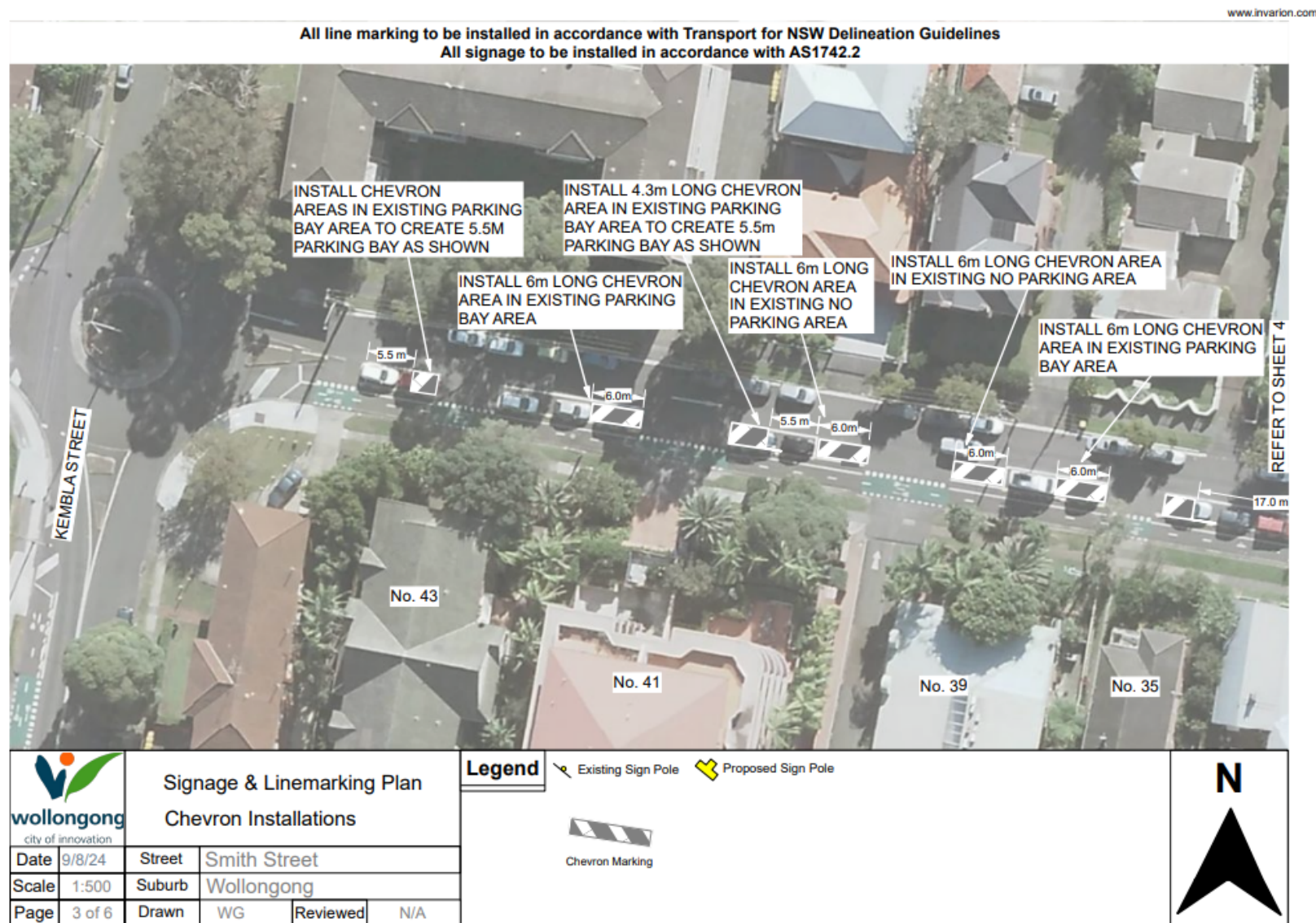


Item 2.3 - Wollongong, Smith Street – Chevron Areas and No Parking Zones – Page 2 of 6



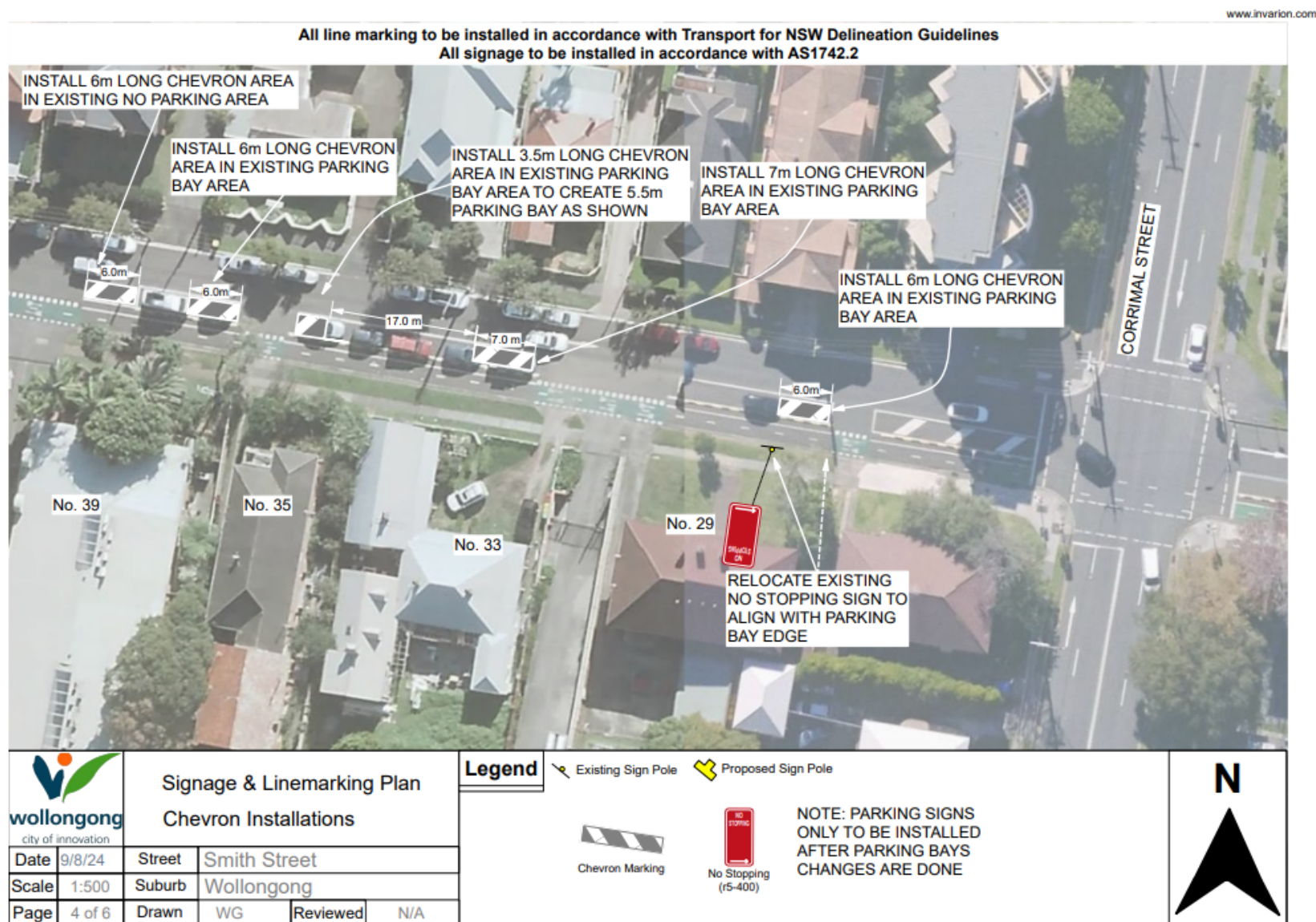


## Item 2.3 - Wollongong, Smith Street – Chevron Areas and No Parking Zones – Page 3 of 6

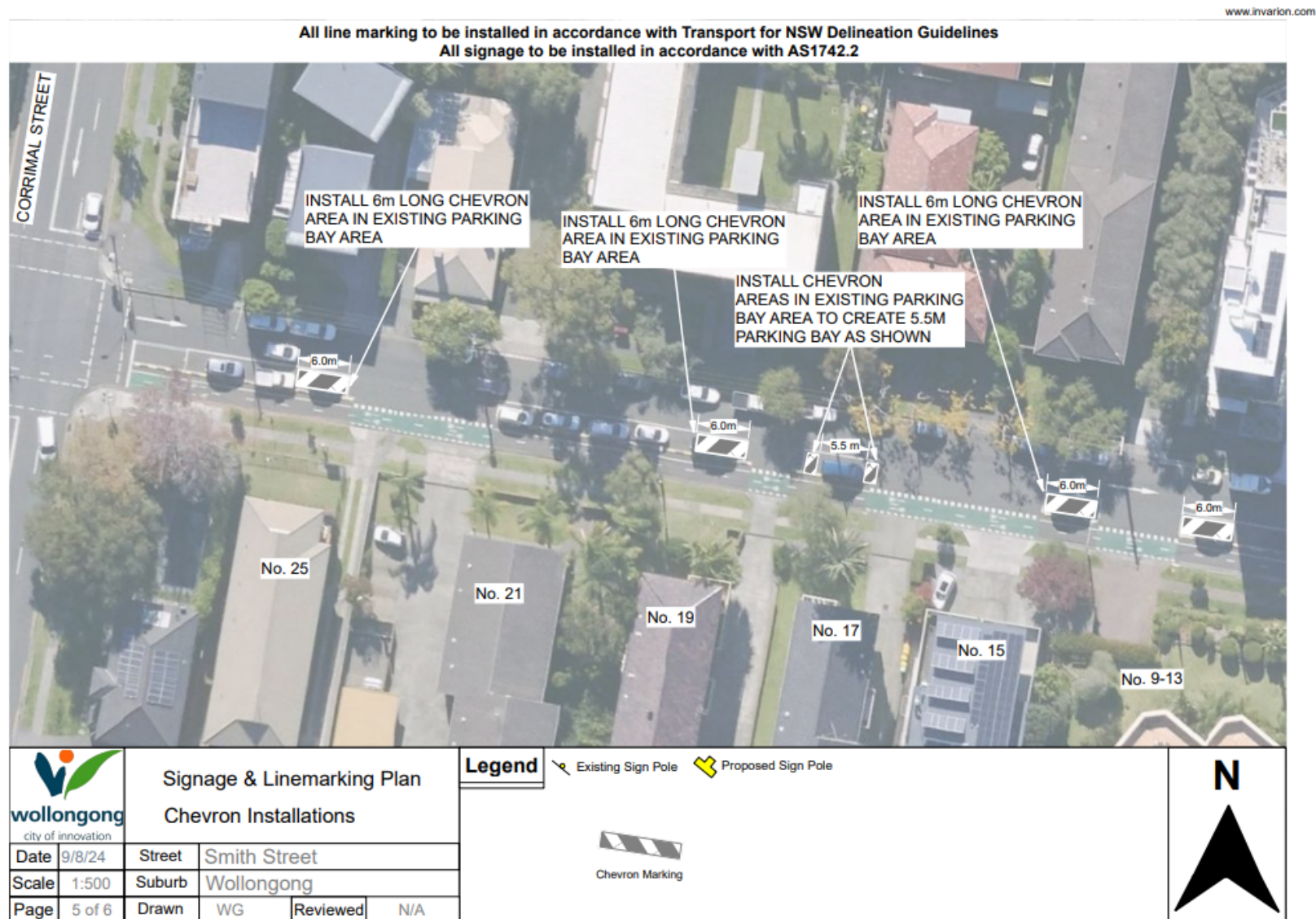




Item 2.3 - Wollongong, Smith Street – Chevron Areas and No Parking Zones – Page 4 of 6



Item 2.3 - Wollongong, Smith Street – Chevron Areas and No Parking Zones – Page 5 of 6





Item 2.3 - Wollongong, Smith Street – Chevron Areas and No Parking Zones – Page 6 of 6



## 2.4 EAST CORRIMAL, Murray Road – Ward 1 – Wollongong Electorate – Traffic Calming

### BACKGROUND

Council is investigating the installation of a raised pedestrian priority crossing at East Corrimal Shops, on Murray Road, East Corrimal, under the Transport Integration and Placemaking (TIP) project. Concerns have been raised about the existing conditions and a history of speeding, near misses, and crashes, including involving pedestrians. This location forms part of school bus routes only.

It is proposed to install:

- 3x rubber speed cushions outside 86A Murray Road, approximately 8m east of the southern leg of Carroll Road
- 3x rubber speed cushions outside 75 Murray Road approximately 15m east of Parker Road
- Street lighting will be upgraded to support the LATM devices. (Currently, the western set of devices is non-compliant. Upgrade design is underway and anticipated to be installed before the end of year)

These speed cushions will create a lower speed environment and improve safety for pedestrians, cyclists, and motorists in the area. The layout is intended to discourage drivers from diverting around the cushions (which can increase head-on crash risks) and also provides a bypass option for cyclists to take the lane when travelling through the area.

### CONSULTATION

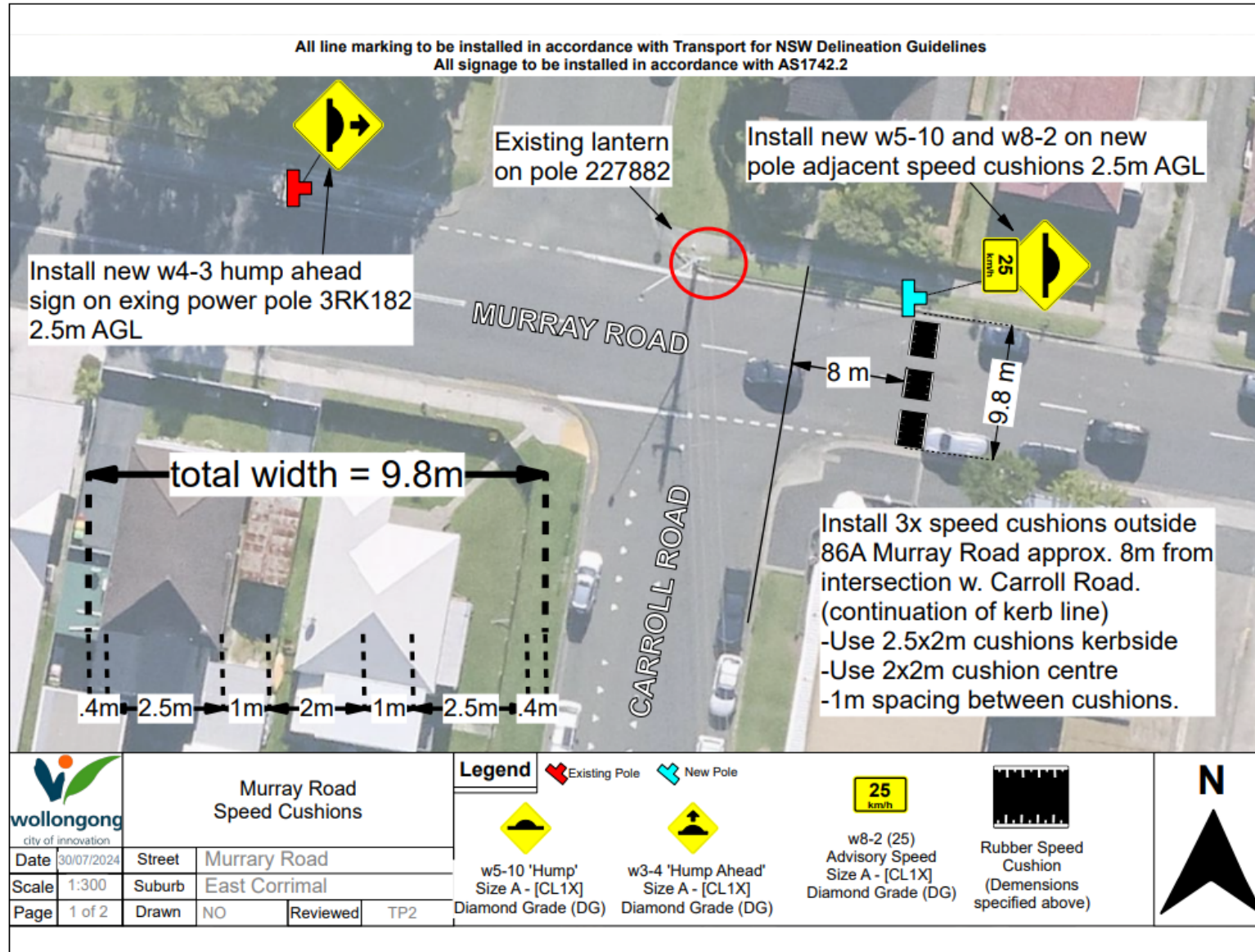
Since this work has come from a motion by Council, specific consultation has not taken place. Notification of nearby residents will occur prior to works being installed.

### PROPOSAL

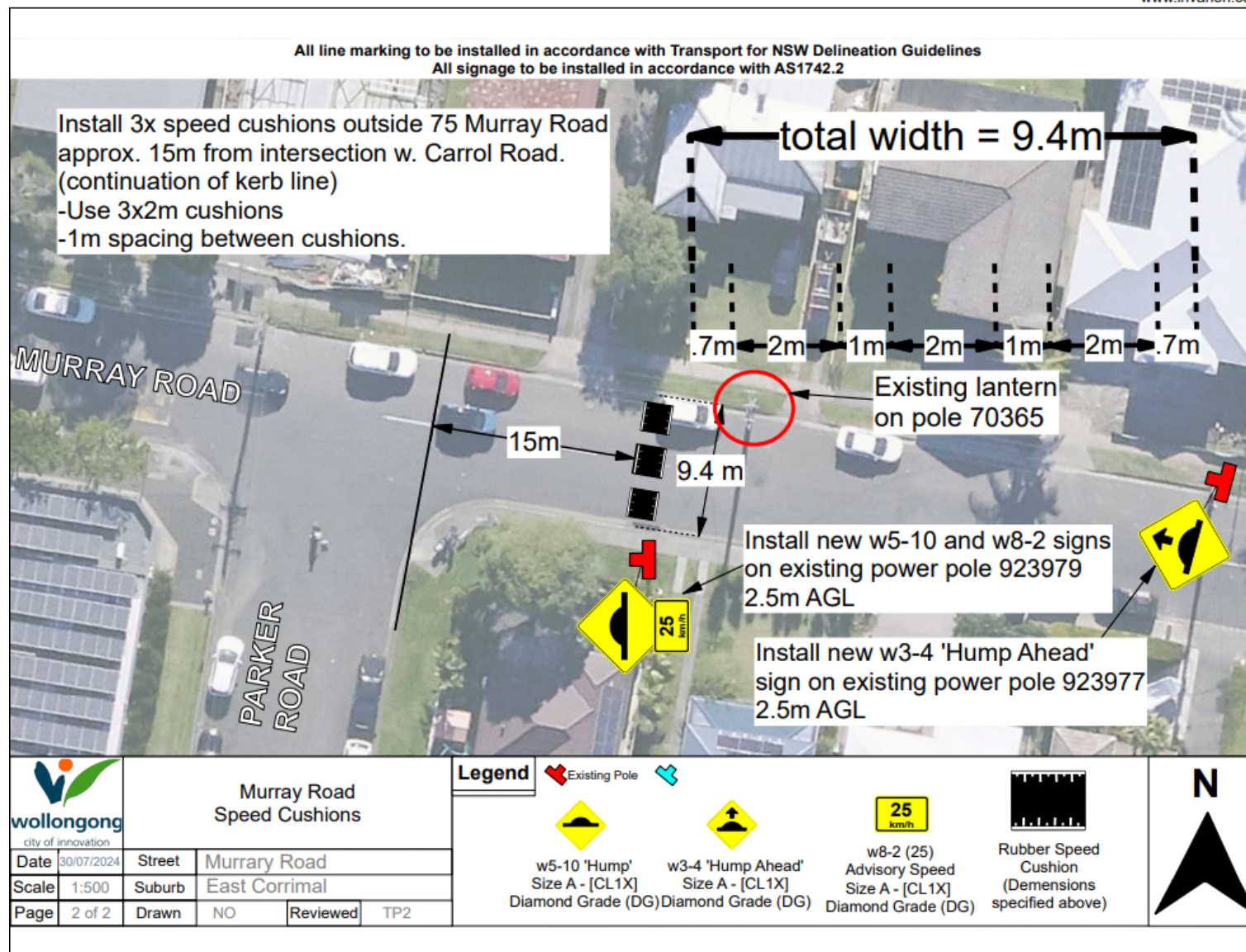
The attached plans be approved.

Item 2.4 – East Corrimal, Murray Road – Traffic Calming – Page 1 of 2

www.invarion.com









### 3 REGULATION OF TRAFFIC

#### 3.1 OTFORD to WOLLONGONG, Various Locations – Ward 1 and 2 – Heathcote, Keira and Wollongong Electorate – MS Gong Ride (Class 1)

##### BACKGROUND

The MS Gong Ride is proposed to occur on Sunday 3rd November 2024. For over 41 years on the first Sunday in November, 10,000 cyclists depart Sydney on a journey to Wollongong in Australia's most iconic cycling event; the MS Gong Ride, held to support Australian's living with MS. This event is the most significant fundraising event for MS Plus.

The event starts at 6am in Tempe, Sydney with riders expected to start arriving into Lang Park from 8am, with the final rider expected approximately 4:00pm.

Riders follow Lady Wakehurst Drive (Otford) then Lawrence Hargrave Drive as they work their way down the coast to Wollongong. The route follows Pioneer Rd at Woonona, then proceeds along Squires Way, George Hanley Dr and Cliff Road in North Wollongong, then enter Lang Park via Marine Drive.

Please refer to TGS for all the road closures relevant to roads in Wollongong City Council (noting that TGS includes all roads closures from Sydney to Wollongong).

The methods of accessing the event will include via bicycle, riders will then either catch the train home or make alternative arrangements to return home

##### CONSULTATION

The Event Organiser, MS Plus has conducted very thorough stakeholder consultation as they believe stakeholder management is essential to a successful event. Operational stakeholders have been consulted throughout the planning process on both an individual basis and within scheduled meetings.

Stakeholders include: NSW Ambulance, NSW National Parks and Wildlife Service, NSW Police, St Johns Ambulance, Sydney Trains, Transport for NSW, Who Dares Traffic Management Company, Wollongong City Council.

The event organiser has sent out notifications to impacted businesses 5 months prior to event date. Residents will receive a notification on 14th September 2024 and then again two weeks prior to event date.

MS Plus has a calendar of scheduled stakeholder meetings commencing 6 months prior to event date including Traffic and Transport Meetings, Key Stakeholder meetings and Course Drives.

##### PROPOSAL

The Traffic Guidance Scheme and/or Traffic Management Plan be approved subject to:

1. [Council's Standard Conditions for Road Closures](#).
2. The provision of additional warning signage at key intersections where the race route intersections with a collector road, currently there are several intersections without proposed signage.
3. The event organiser to consider the reduction in speed limit to 60km/h on Pioneer Road to improve safety for cyclists.
4. Applicant to install VMS signs for notification prior to (at least 14 days) and during the event at key intersections:
  - a) Applicant to install VMS at key locations where higher traffic flow is expected, including on Burelli Street when riders are travelling home.
  - b) Applicant to install VMS at the finish line.
5. The applicant should consider interaction between right turning vehicles from Park Road into Railway Parade Woonona, this is a new route which is being proposed for 2024 and the risks should be assessed appropriately.

Item 3.1 - WOLLONGONG, Various Locations – MS Gong Ride

Due to the significant number of plans, the plans will not be tabled in the agenda. Traffic Committee members will be provided access to a copy of the Traffic Guidance Schemes (TGS') in a link along the Traffic Management Plan (TMP)

ANNEX 1

2024 ROUTE MAP

COURSE MAP & PROFILE  
82KM & 54KM



## 4 UPDATE TO PREVIOUSLY APPROVED ITEMS

### 4.1 STREAM HILL, Darkes Road – Ward 3 – Keira Electorate – Construction of Roundabout

#### BACKGROUND

This item was approved as part of the Local Traffic Committee on 11 June 2024. The initial approved dates were from 29 July 2024 to 4 October 2024 (approx. 10 weeks) which Council believe is adequate time to build the roundabout inclusive of wet weather time. However, this period did not include any inclement weather delays, therefore Glennos Constructions has submitted a request to extend the closure for 2 weeks in the event of inclement weather. The additional 2 weeks is currently not needed as they are tracking on time but will be implemented by Glennos if they experience inclement weather. The new approved closure period will now be from 29 July 2024 to Friday 18 October 2024.

*Glennos Constructions has been engaged by AIXA to construct the Parkside Stage 3 subdivision at Stream Hill.*

*Glennos are proposing to close Darkes Road from Monday 29 July 2024 to Friday 4 October 2024 to assist with the construction of a roundabout at the intersection of Darkes Road and Summit Street. They are proposing to close Darkes Road between West Dapto Road and the entrance to the Australian Motorlife Museum. Glennos has noted that the key reasons for the closure are road user safety, construction safety, changes in road levels (earthworks), minimising impact to the community, no bus route impact and being able to effectively maintain pedestrian movements.*

*A soft road closure will be set up at Darkes Road/West Dapto Road (western closure point) which will allow construction traffic who are working at the adjacent subdivision to access Darkes Road up to Summit Street. When the workday is completed, it is the responsibility of traffic control to implement the hard closure with water filled barriers at Darkes Road/West Dapto Road.*

*A hard closure will be set up at the intersection of Darkes Road/Motorlife Museum (eastern closure point). Vehicles will have adequate space make a U-turn at this point if they travel past the VMS warning signage.*

*Pedestrians will be detoured around the closure; there is no footpath network available on Darkes Road however a suitable travel path has been proposed on the TGS to detour around work site should pedestrians traverse the area*

#### CONSULTATION

- *Glennos Constructions will be completing letterbox drops two weeks prior and again one week prior to the commencement of works to notify all residents and business owners affected by the closure.*
- *A contact number will be provided to residents for a Glennos Constructions representative so that they can contact a decision-making team member regarding any issues or access requirements.*
- *VMS (Variable Message Sign) Boards will be installed at locations on West Dapto Road, Darkes Road, Princes Highway and Kanahooka Road (2) weeks prior to the closure to inform the local community & other traffic of the intended closure. These will remain in place until the road reopens.*
- *Following Traffic Committee approval, NSW Police and other Emergency Services shall be advised of the Road Closure dates*

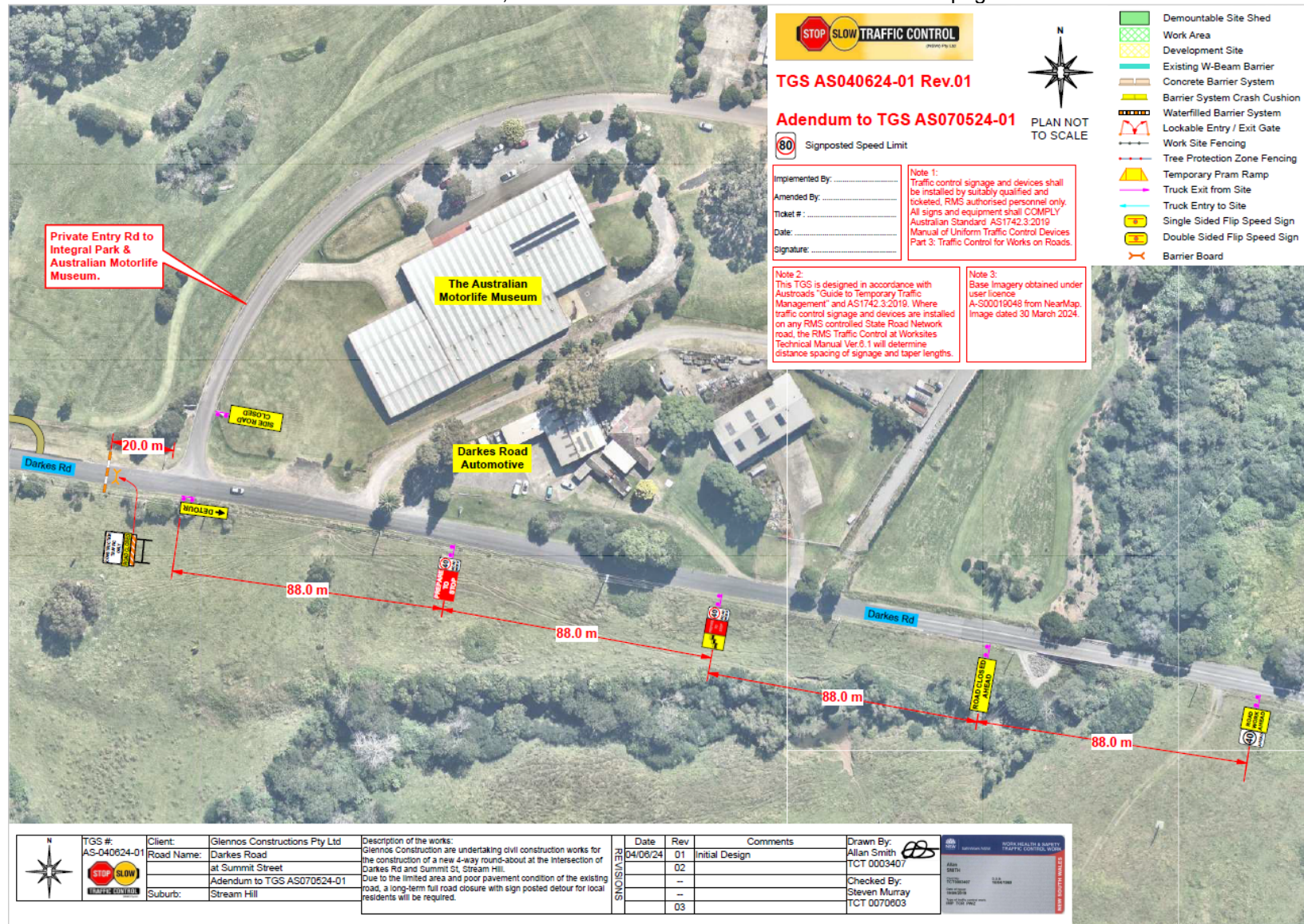
#### PROPOSAL

The Traffic Guidance Scheme and/or Traffic Management Plan be approved subject to:

- [Council's Standard Conditions for Road Closures.](#)
- Glennos alerting Council if they require the additional 2 weeks extension as soon as this information is available.
- Glennos consulting directly with Neighbourhood Forum 8 (NF8). Consultation should provide detailed information on why the timeline cannot be met. This should preferably occur directly after Council is notified.
- Full community notification sent out to all the same residents and businesses.
- Update to VMS boards being made prior to extension of road closure.

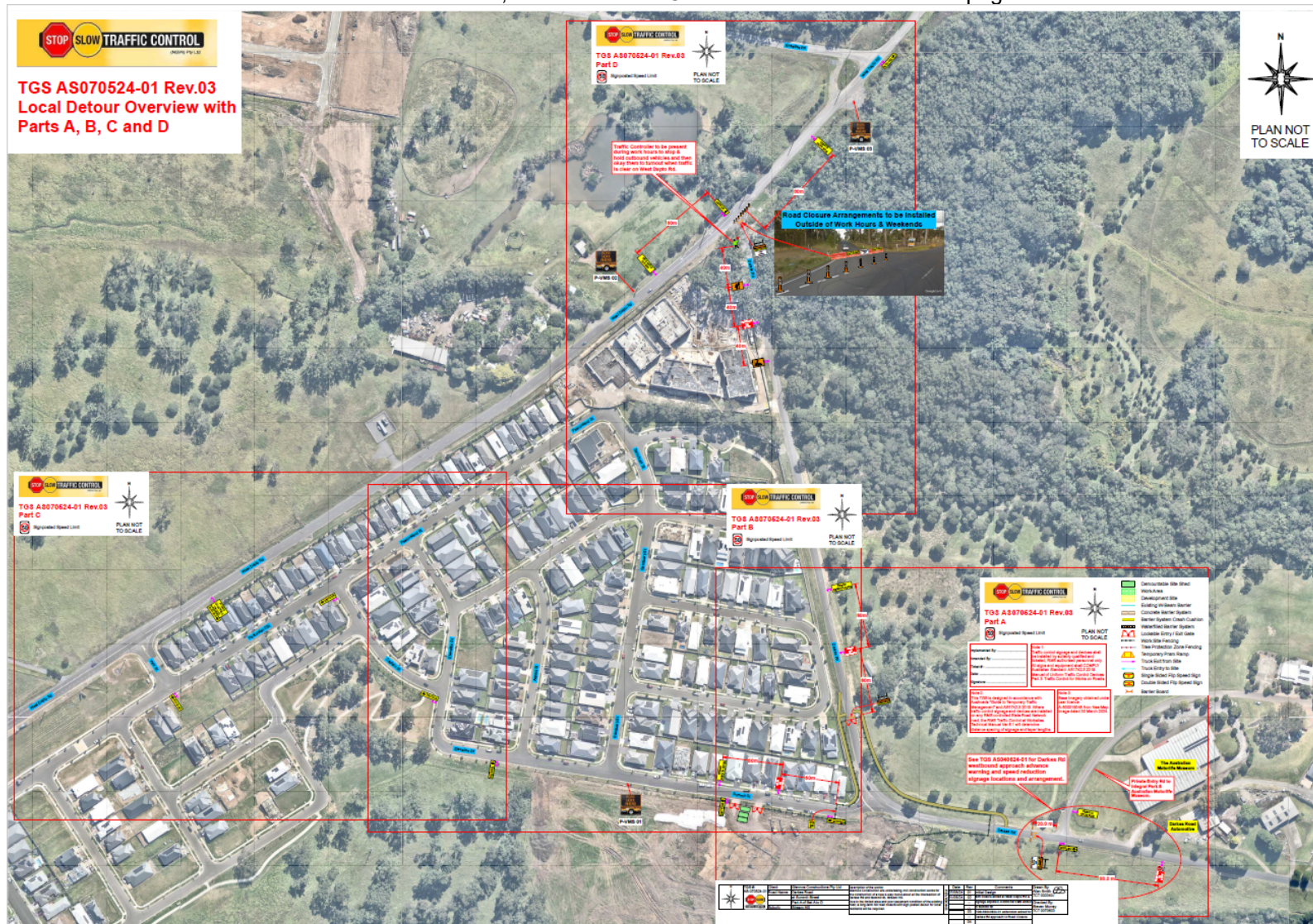


Item 4.1 – STREAM HILL, Darkes Road – Construction of Roundabout – page 1 of 7



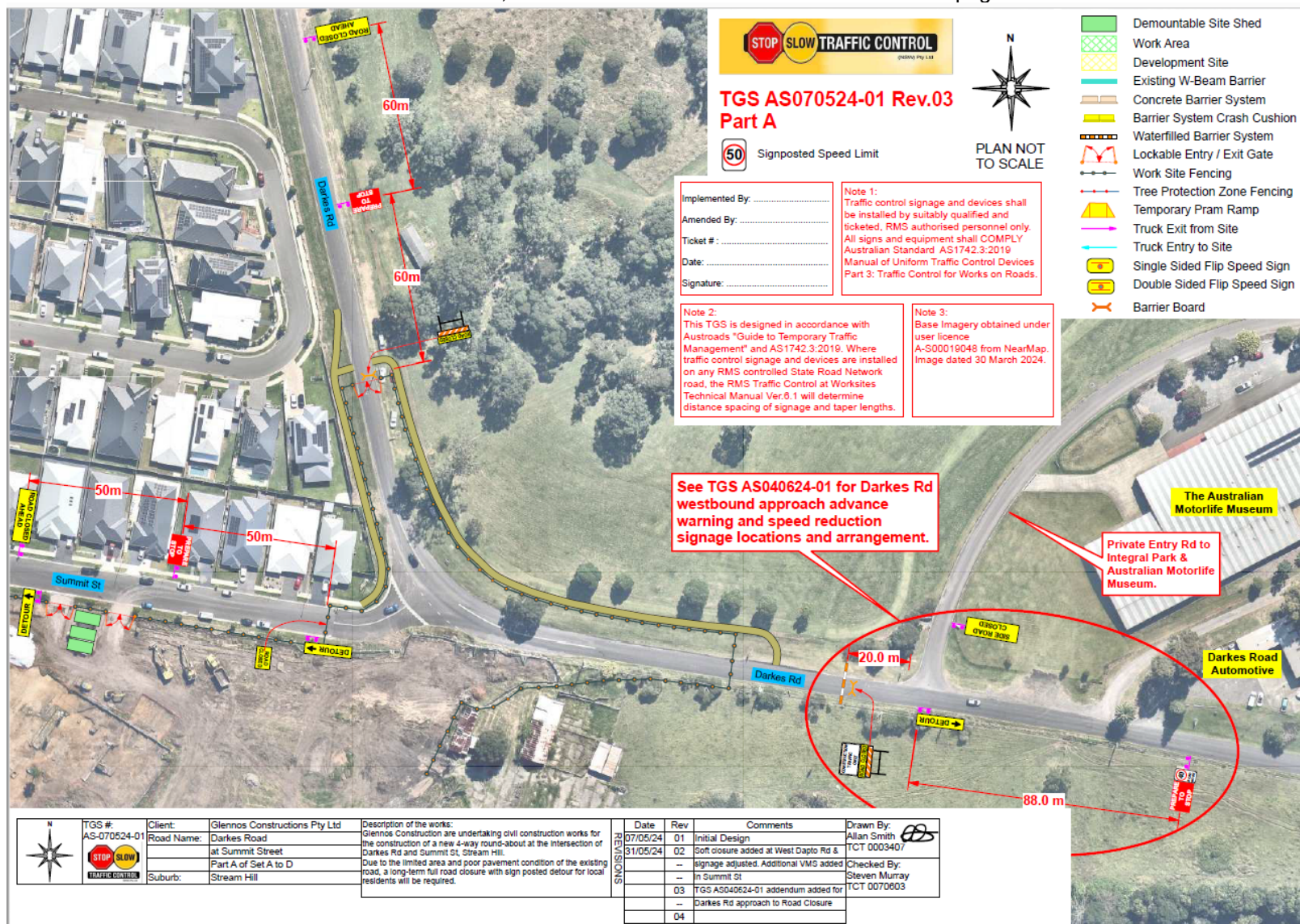


Item 4.1 – STREAM HILL, Darkes Road – Construction of Roundabout – page 2 of 7





Item 4.1 – STREAM HILL, Darkes Road – Construction of Roundabout – page 3 of 7





Item 4.1 – STREAM HILL, Darkes Road – Construction of Roundabout – page 4 of 7



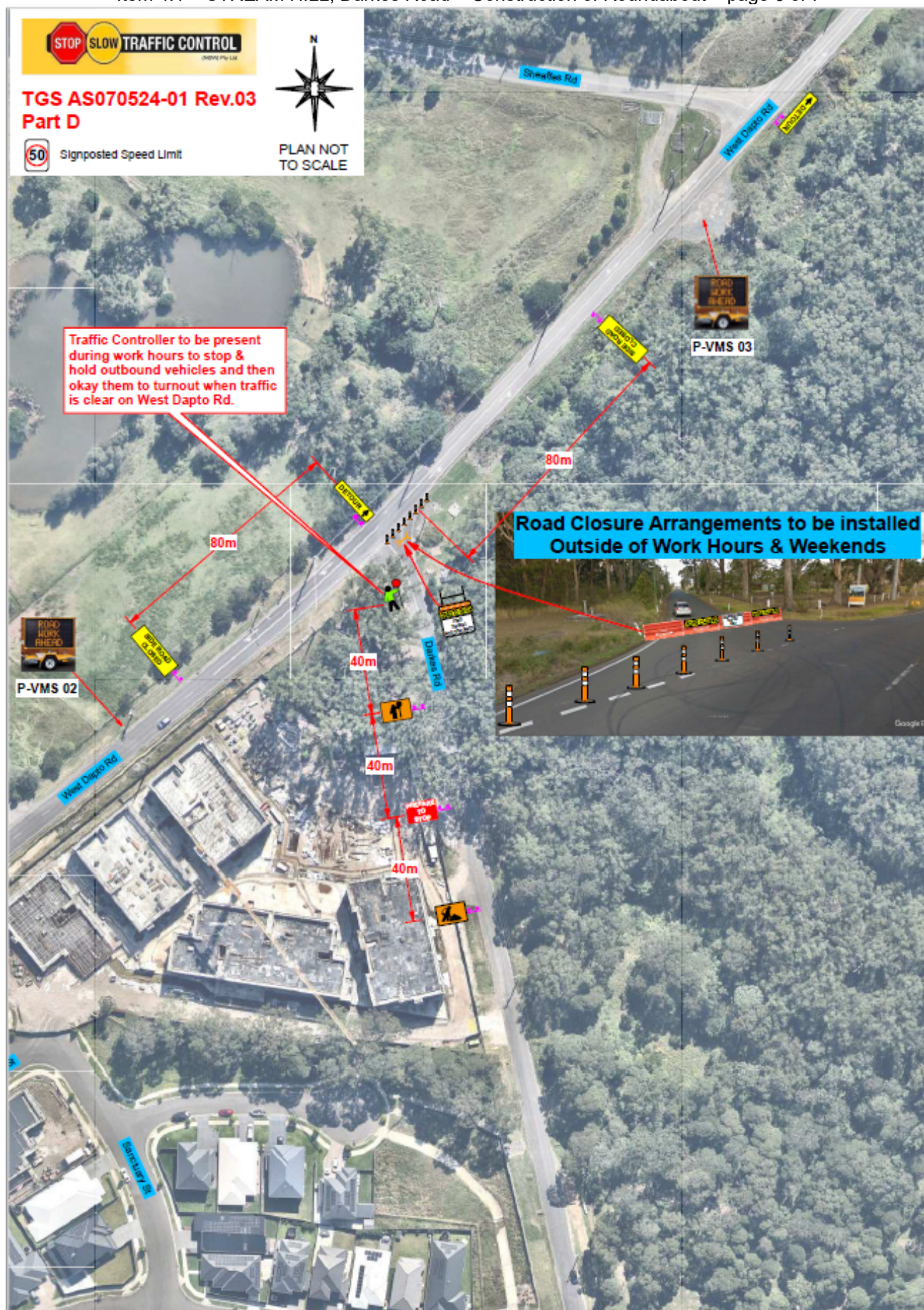


Item 4.1 – STREAM HILL, Darkes Road – Construction of Roundabout – page 5 of 7



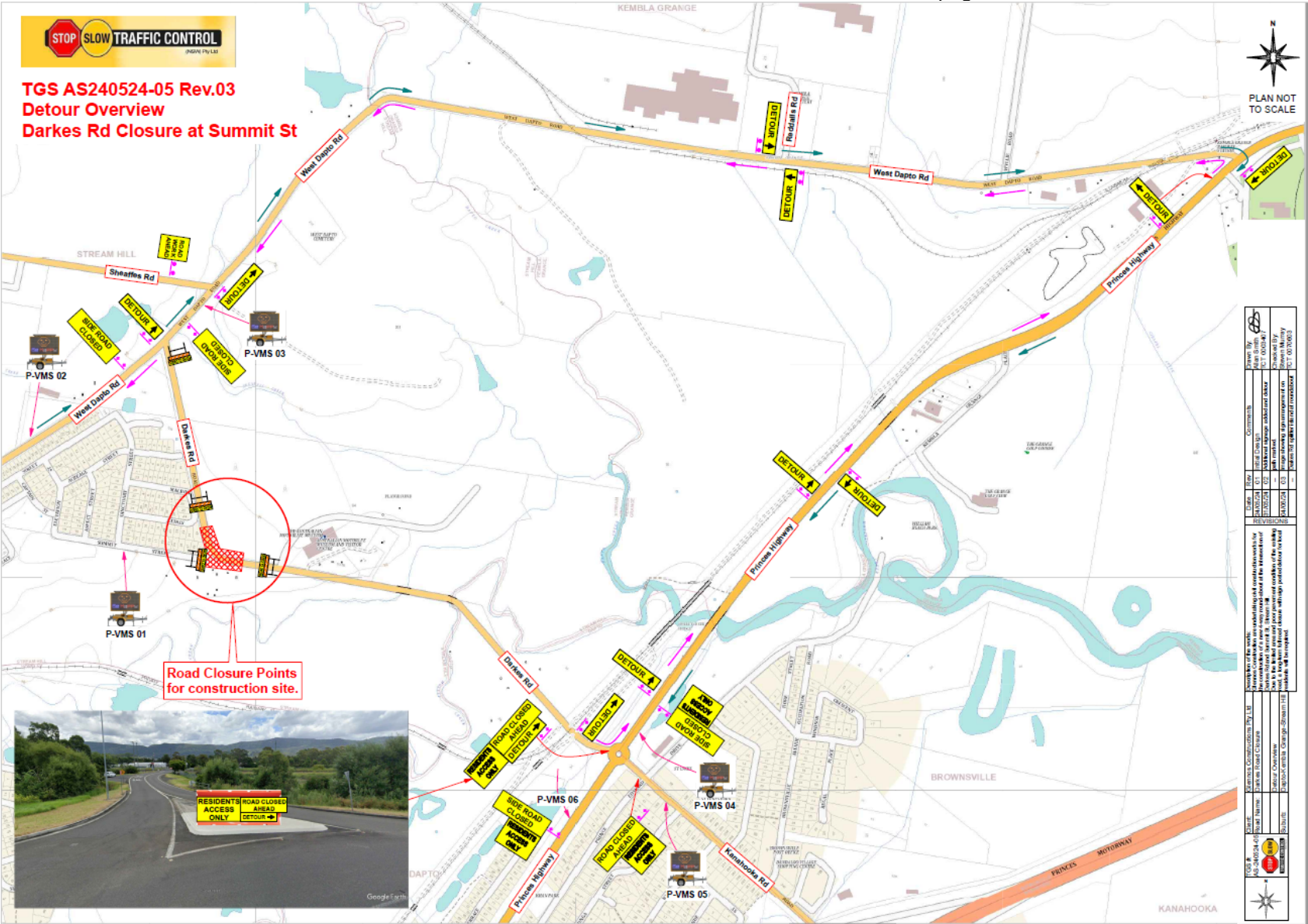


Item 4.1 – STREAM HILL, Darkes Road – Construction of Roundabout – page 6 of 7





Item 4.1 – STREAM HILL, Darkes Road – Construction of Roundabout – page 7 of 7



## 5 NOTIFICATION UNDER TEMPORARY DELEGATIONS (FOR INFORMATION ONLY)

### 5.1 WOLLONGONG, Auburn Street – Ward 2 – Wollongong Electorate – Timed No Parking Zone

#### BACKGROUND

Council has reviewed the traffic conditions at Auburn Street, Wollongong. Pick-up and drop-off difficulties for Persons with Disabilities is experienced at this site along No. 17 (Disability Services Establishment) Auburn Street, Wollongong. On-street parking changes were requested outside the establishment to address safety and accessibility issues when picking-up/dropping off.

It is proposed to install timed No Parking Zone (from 8am to 5pm Monday to Friday) along Auburn Street to coincide with disability services operation hours. Parking will be unrestricted outside this time and 2 hours on Saturday from 8.30am to 12.30pm.

#### CONSULTATION

Consultation has occurred prior to the Local Traffic Committee. Council received (1) response supporting the proposal.

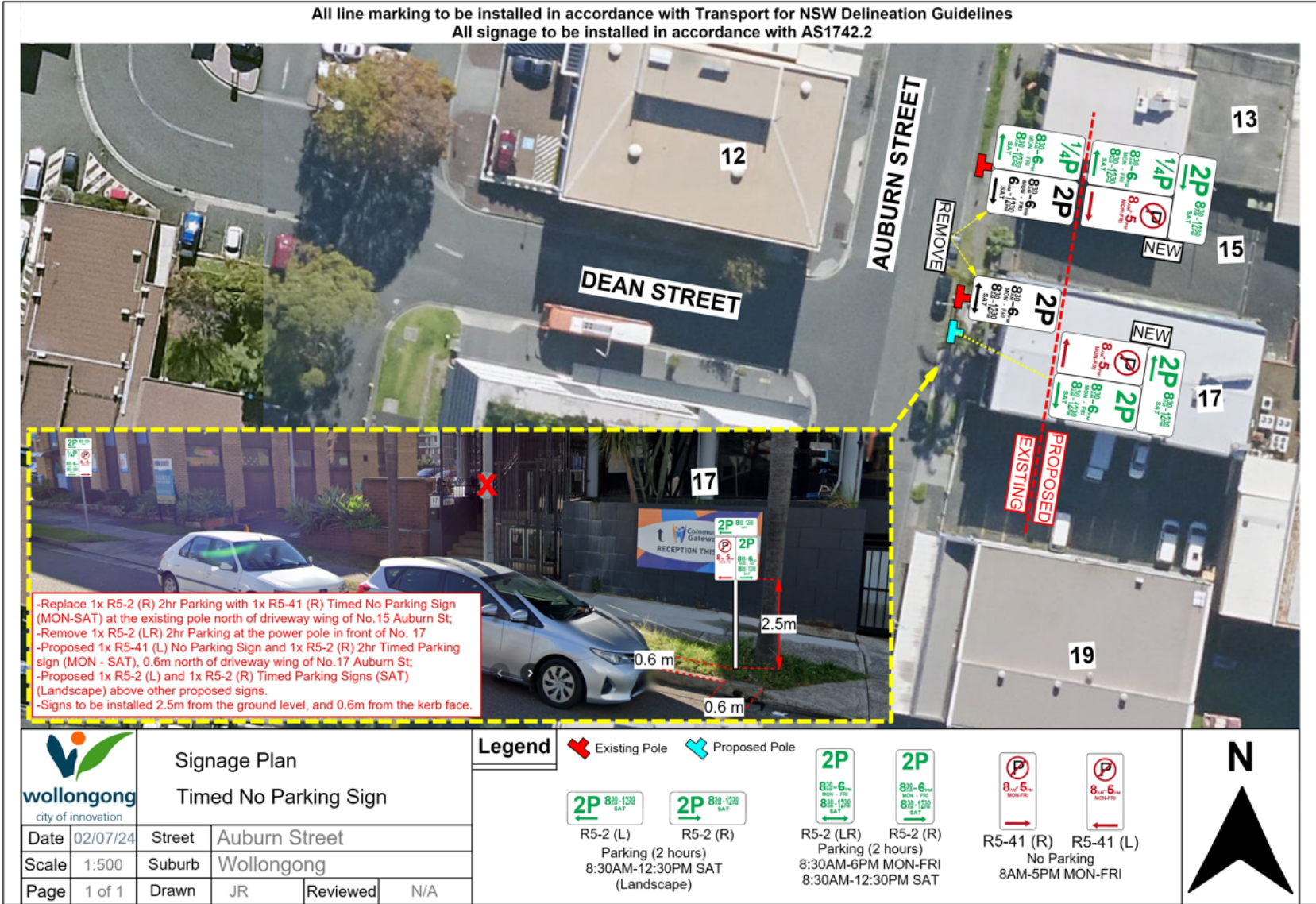
#### PROPOSAL

The Committee note the approved plan/s.

DRAFT

## Item 5.1 - Wollongong, Auburn Street – Timed No Parking Signs

[www.invarion.com](http://www.invarion.com)





## 5.2 WOLLONGONG, Crana Place – Ward 2 – Wollongong Electorate – No Parking Zone

### BACKGROUND

Council has reviewed the traffic conditions at Crana Place, Wollongong. No. 1 Crana Place consists of 110 dwellings serviced by skip bins. Residents report repeated missed services due to cars parked in front of the bins. Historically, the area in front of the bins has chevron/pavement marking to discourage parking but has since faded. This was likely installed when the development was constructed and is non-standard/non-enforceable.

It is proposed to install No Parking signage on either side of the bins, within the cul-de-sac. The proposed changes will support waste collection while minimising impact on residents as the No Parking area can be used for pick up/drop off.

### CONSULTATION

- Consultation has occurred prior to the Local Traffic Committee (LTC) with WCC Waste + Resource Recovery team, and Waste Collection Service operator. Feedback received confirmed regular missed services (three in two months) and was supportive of introducing parking control signage.
- It is proposed to notify nearby residents after LTC endorsement.

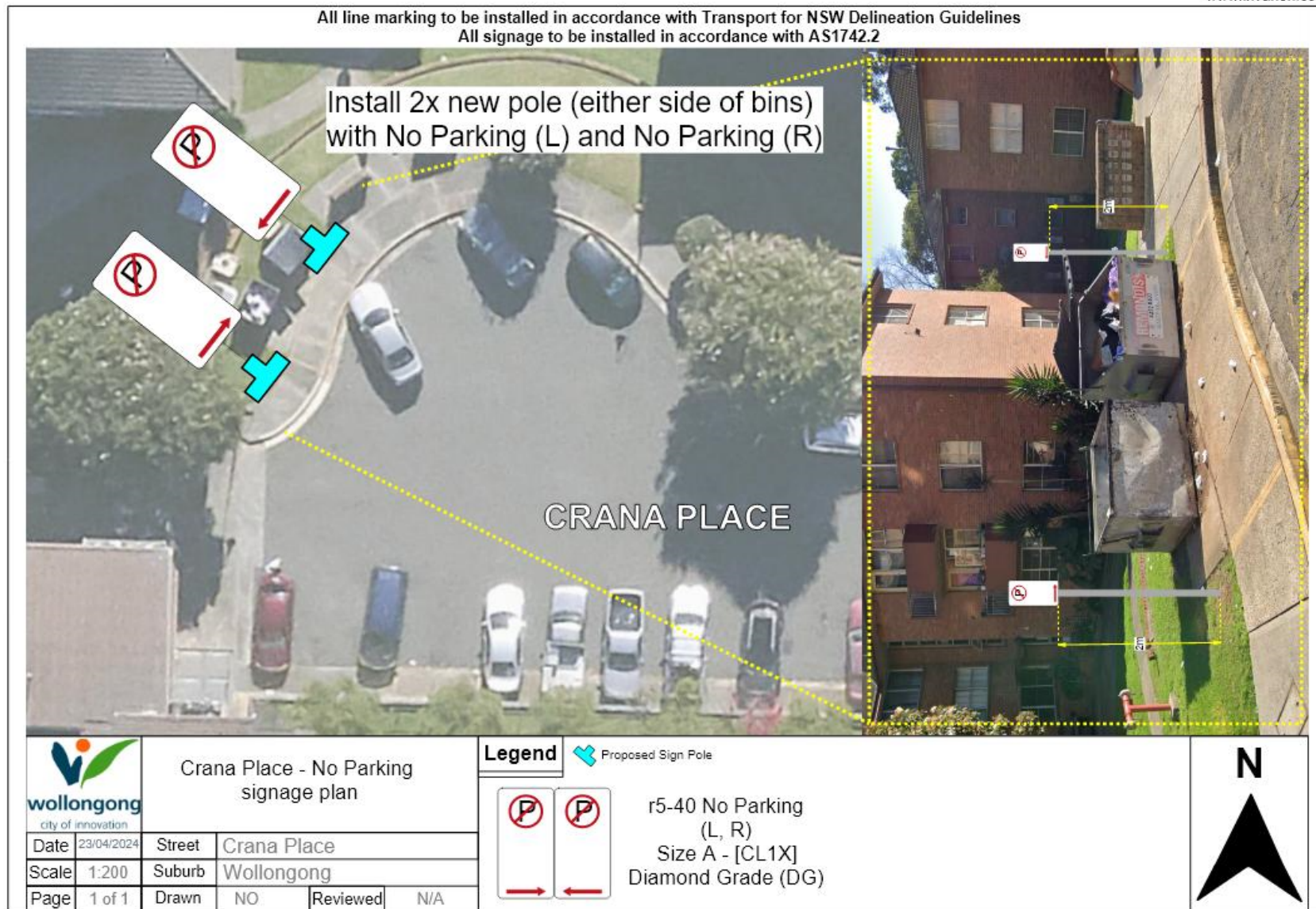
### PROPOSAL

The Committee note the approved plan/s.

DRAFT

Item 5.2 Wollongong, Crana Place – No Parking

www.invarion.com



### 5.3 HELENSBURGH, Parkes Street – Ward 1 – Heathcote Electorate – No Stopping

#### BACKGROUND

Council has reviewed the traffic conditions at Parkes Street, Helensburgh, at the intersection with Rajani Road. Illegal parking is reported at this location, however the geometry of the intersection does not make it clear where parking can legally occur. It is proposed to install No Stopping signs 12.5m north of Rajani Road and 10m west of Parkes Road.

Compliance and Regulation have advised that the geometry makes the difficult to enforce. Parking close to the intersection limits sight distance at the intersection as well as at nearby driveways. As there is no kerb and gutter on the southern side of the intersection, parking occurs on the verge.

#### CONSULTATION

Consultation has not occurred prior to the Local Traffic Committee. As there is no loss of parking, it is proposed to notify surrounding residents and businesses after installation is approved.

#### PROPOSAL

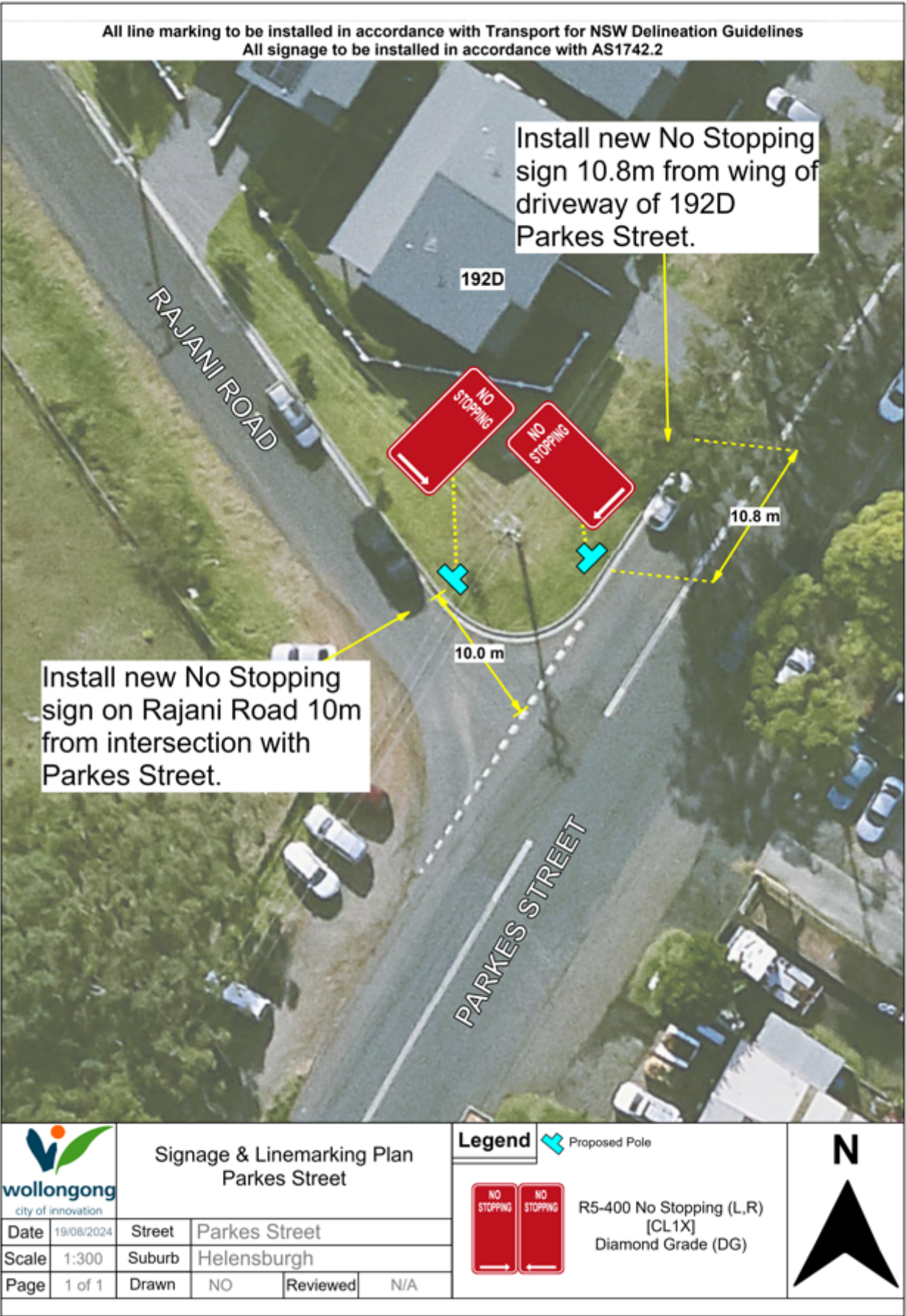
The Committee note the approved plan/s.

DRAFT



Item 5.3 - Helensburgh, Parkes Street – No Stopping

www.invarion.com



**6 DESIGN MATTERS****6.1 THIRROUL, Phillip Street – Ward 1 – Raised Pedestrian Priority Crossing (Wombat)****BACKGROUND**

A Raised Pedestrian Priority Crossing is proposed for Phillip Street, Thirroul. The facility is being constructed to improve pedestrian safety and accessibility. The project is funded through the Infrastructure Delivery Program (IDP). The Project is scheduled to be construction delivered in the 2024/25 Financial Year.

The facility provides an upgrade to the existing at-grade marked pedestrian crossing which is no longer compliant with the current standards. The project includes new pavers, supporting regulatory signage and line-marking. Lighting has been reviewed as part of the design process.

**CONSULTATION**

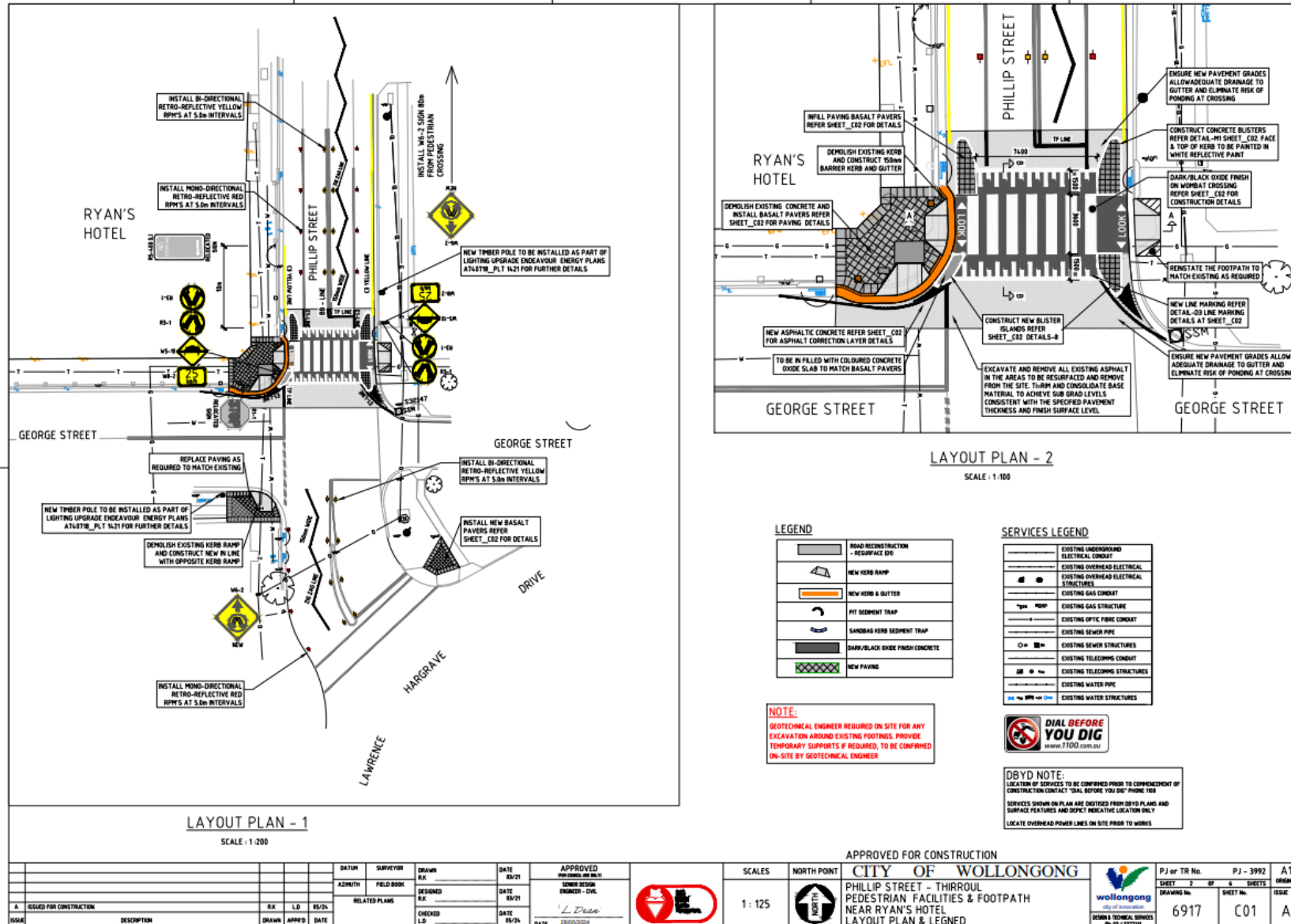
Consultation has occurred prior to the local traffic committee with the local community in 2021/22. See attached with submission.

**PROPOSAL**

The attached plan/s be approved subject to:

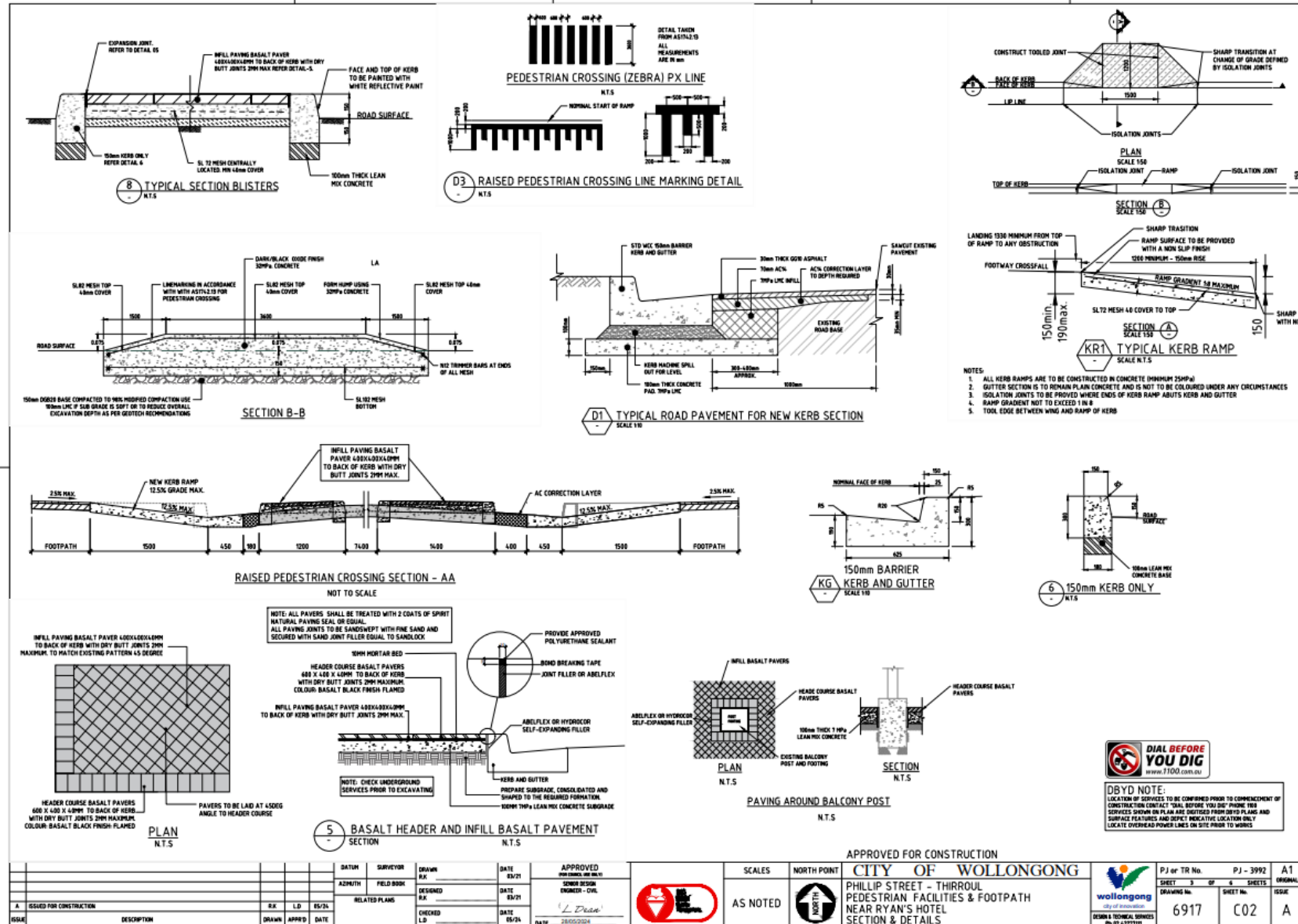
1. All pedestrian warning signs (including advanced warning) being fluorescent as per the Transport for NSW sign register.
2. The parking restrictions be reviewed/reduced on the eastern side of Phillip Street between the community centre access and George Street. The installation of a kerb blisters can reduce the No Stopping length required (and allow for parking) as pedestrians have better sight lines.

Item 6.1 - THIRROUL, Phillip Street – Raised Pedestrian Priority Crossing – page 1 of 2





## Item 6.1 - THIRROUL, Phillip Street – Raised Pedestrian Priority Crossing – page 2 of 2



## 7 DEVELOPMENT MATTERS

### 7.1 WARRAWONG, Jackson Avenue – Ward 3 – Wollongong Electorate - Proposed Speed Table (raised)

#### BACKGROUND

As a requirement of the development consent the developer is required to submit a signs and lines plans plan for Council approval. The road design and layout has been prepared and approved as part of the development application assessment. The plans are designed in accordance with AUSTRROADS Guide to Road Design, Council's Development Control Plan and Council's Subdivision Policy. The DA number is DA-2020/887

The development proposes Subdivision of one lot to create seventeen torrens title lots, riparian management works, road extension from Jackson Avenue to Little Place and a right of carriageway servicing four lots.

#### CONSULTATION

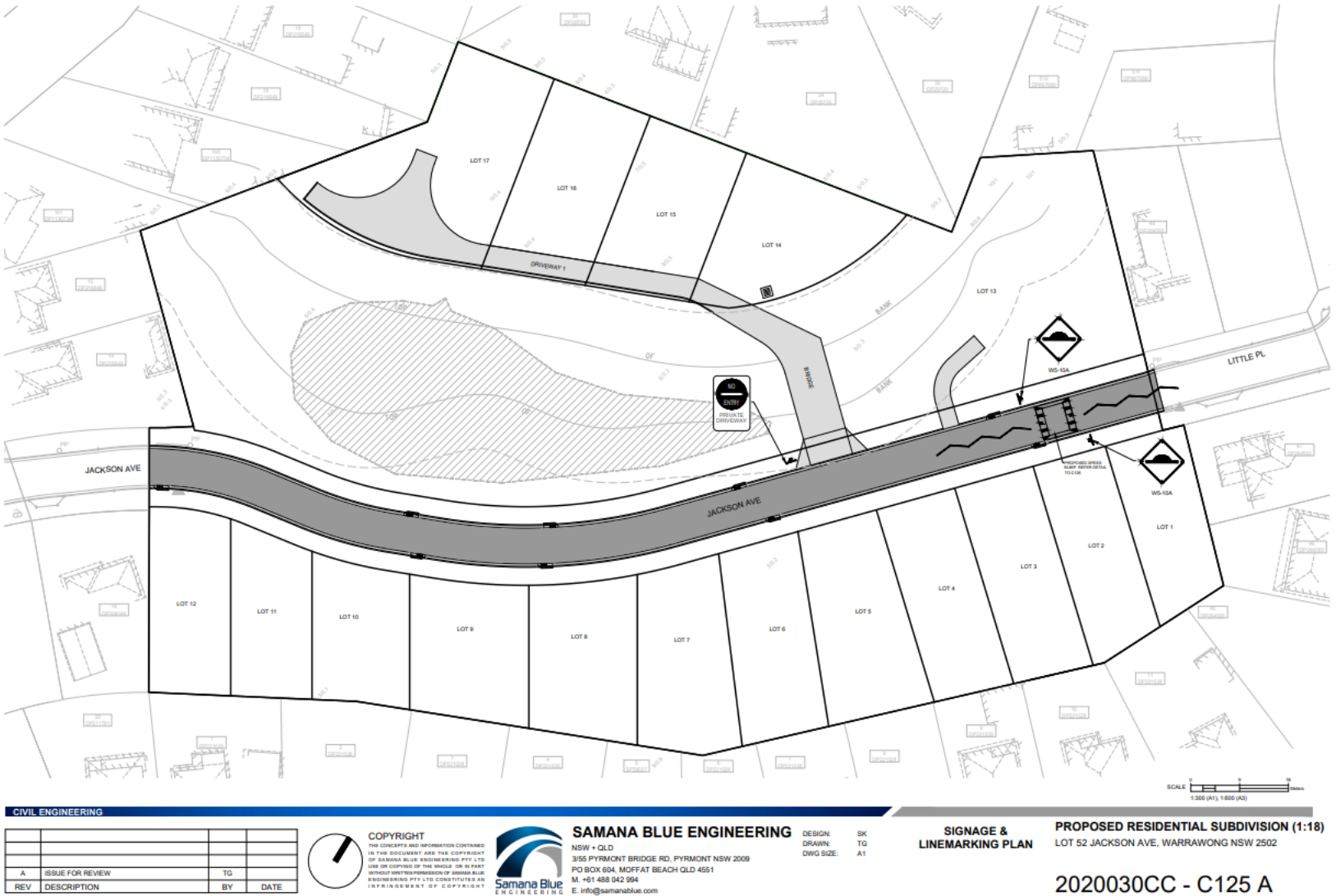
Consultation and notification to adjoining and affected residents of the development is undertaken during the development application process. Consultation with relevant stakeholders such as utility providers and Transport for NSW has also been carried out as part of the development application and the detailed design.

#### PROPOSAL

The attached plan be approved subject to:

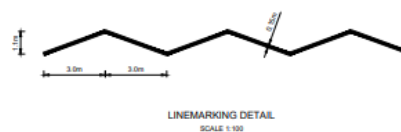
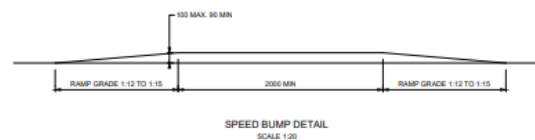
1. The removal of the speed table shown on the plan as well as associated zig zag linemarking and hump signs. The speed table is not currently part of Council's future planning, and they are generally not installed in isolation. Parked vehicles and the narrow 7.5m carriageway will create a constrained environment to slow vehicle speeds.
2. The "No Entry" sign being installed on private property (not within the road reserve). This sign will not be enforced by rangers nor maintained by Council. Council does not support the use of this sign within the road reserve.

Item 7.1 – WARRAWONG, Jackson Avenue – Proposed Speed Table (raised)– page 1 of 2

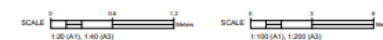




Item 7.1 – WARRAWONG, Jackson Avenue – Proposed Speed Table (raised)– page 2 of 2



NOTES:  
1. EXACT LOCATION OF ALL SIGNS IS TO BE VERIFIED ON SITE WITH THE SUPERINTENDENT PRIOR TO INSTALLATION.  
2. LOCATION OF STREET NAME SIGNS TO BE CONFIRMED ON SITE BY THE SUPERINTENDENT



CIVIL ENGINEERING

A	ISSUE FOR REVIEW	TG	
REV	DESCRIPTION	BY	DATE



COPYRIGHT  
THE CONTENTS AND INFORMATION CONTAINED  
IN THIS DOCUMENT ARE THE COPYRIGHT  
OF SAMANA BLUE ENGINEERING PTY LTD  
USE OR COPIES OF THE WHOLE OR IN PART  
WITHOUT WRITTEN PERMISSION OF SAMANA BLUE  
ENGINEERING PTY LTD CONSTITUTES AN  
INFRINGEMENT OF COPYRIGHT



**SAMANA BLUE ENGINEERING**  
NSW + QLD  
3/55 PYRMONT BRIDGE RD, PYRMONT NSW 2009  
PO BOX 504, MCFFAT BEACH QLD 4551  
M: +61 488 042 004  
E: info@samana-blue.com

DESIGN: SK  
DRAWN: TG  
DWG SIZE: A1

**SIGNAGE &  
LINEMARKING DETAILS**

**PROPOSED RESIDENTIAL SUBDIVISION (1:18)**  
LOT 52 JACKSON AVE, WARRAWONG NSW 2502

2020030CC - C126 A

### DOB IN A HOON (SPEED COMPLAINTS)

Items for NSW Police to acknowledge for appropriate monitoring and enforcement action.

STREET	SUBURB	CONCERN	TIMES RAISED THIS YEAR
Wyndarra Way	Koonawarra	Reports of burnouts along Wyndarra Way at all hours of the day and night. Regularly waking residents and putting safety at risk. Skid marks can be viewed all along the street.	2
Gayantay Way	Woonona	Speeding along this road. Concerns with pedestrian safety given the area is predominantly elderly housing and young children riding on the roads when visiting.	1
Rosemont Street	West Wollongong	Speeding along this street particularly over the crest near 33 Rosemont Street.	1
George Fuller Dr / Redgum Forest Way	Figtree	Concerns with ongoing speeding, with significant numbers of children in this community accessing local open space.	1
Intersection of Parkes St/Walker St	Helensburgh	Speeding and hooning issues, especially at the roundabout, noted crash earlier this year with young drivers doing burnouts.	1
Intersection of Goolana St/Weerona St	Berkeley	Complaints of speeding and non-compliance of give way rule in this intersection (near miss reported).	1
Intersection of Jarrah Cres/Derribong	Cordeaux Heights	Non-compliance of give way rule at intersection. People aren't slowing down to check and pulling out in front of cars becoming very dangerous.	1
Fairy Meadow Parkway	Primbee	Speeding vehicles in the street (traffic movements around school pick up and drop off times as well as on game days at the adjacent Wetherall Park). One side of the street is parked out and drivers speed in the narrow residual road space.	1
Redman Avenue	Thirroul	Non-compliance of road rules with e-bikes on Redman Ave, Thirroul and on the shared bike path near McCauley's Beach.	2
Cordeaux Road	Mount Kembla	Unsafe behaviour from dirt bike riders in school zone leading to harassing other motorists	1
Corrimal & Market Street	Wollongong	Noise pollution by cars and motorbikes	1
Stuart Park Carpark	North Wollongong	Anti-Social Behaviour such as burnouts in skydive the beach carpark. Customer has called Police many times.	1