

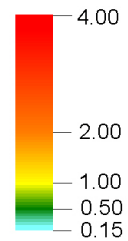

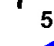



#### LEGEND

-  TUFLOW Model Boundary
-  Catchment Boundary

Peak Flood Depth (m)



-  5m Water Level Contour (m AHD)
-  5 Water Level (m AHD)
-  1m Water Level Contour (m AHD)

Title:

### Review of Towradgi Creek Flood Study Maximum Flood Depths and Water Levels: 2% AEP Event

BMT WBM endeavours to ensure that the information provided in this map is correct at the time of publication. BMT WBM does not warrant, guarantee or make representations regarding the currency and accuracy of information contained in this map.



0 250 500m  
Approx. Scale

Figure:

E-4

Rev:

-

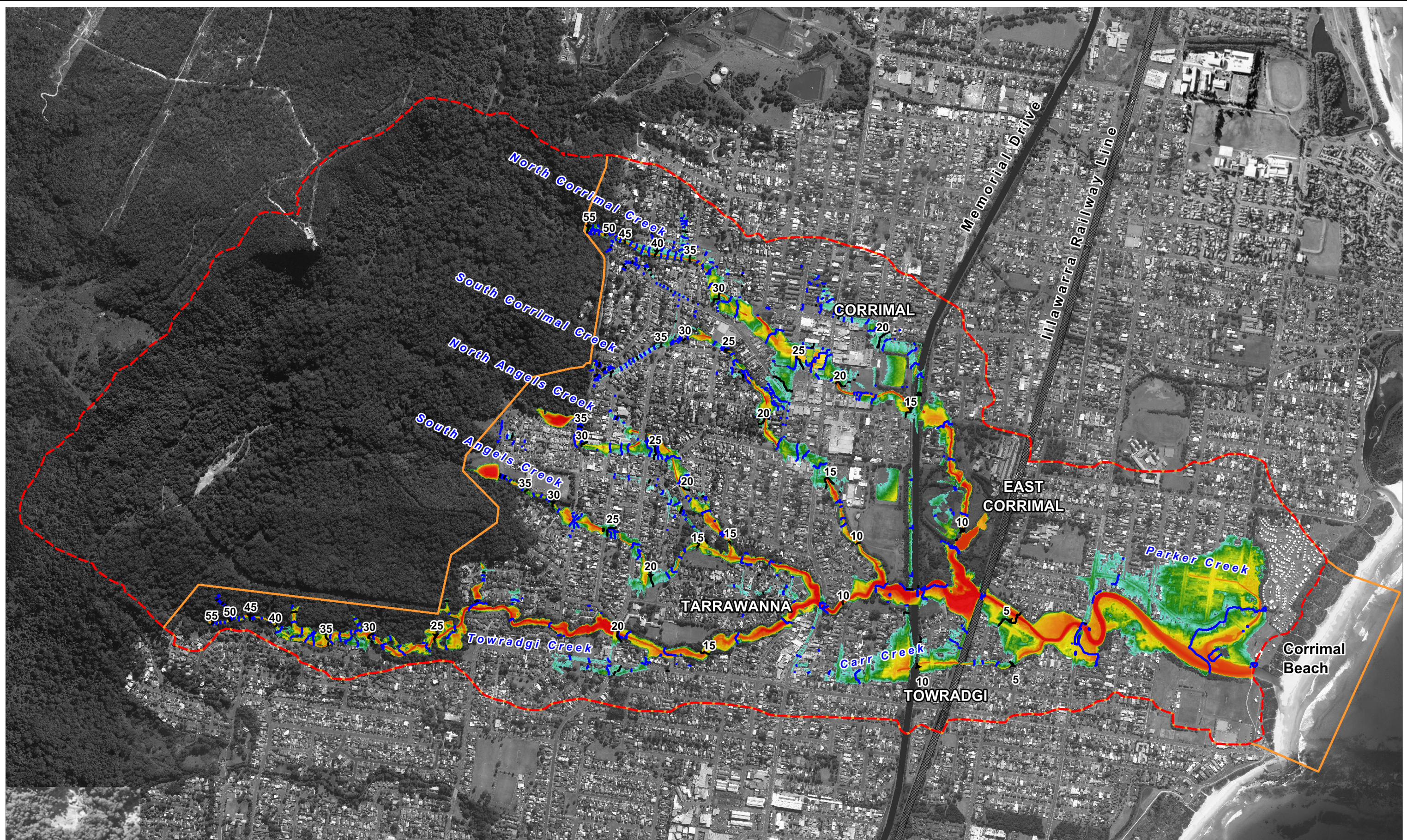


Filepath : S:\WATERPROJECTSS1291 - Water - Towradgi Ck Flood Study\Drafting\WOR\Figures\AppendixE\FigureE4\_050YR\_Depth\_Level.wor







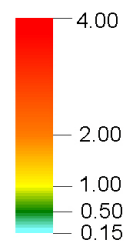







# LEGEND

-  TUFLOW Model Boundary
-  Catchment Boundary

Peak Flood Depth (m)



-  5m Water Level Contour (m AHD)
-  5 Water Level (m AHD)
-  1m Water Level Contour (m AHD)

Title:

## Review of Towradgi Creek Flood Study Maximum Flood Depths and Water Levels: 1% AEP Event

BMT WBM endeavours to ensure that the information provided in this map is correct at the time of publication. BMT WBM does not warrant, guarantee or make representations regarding the currency and accuracy of information contained in this map.

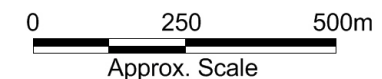


Figure:

E-5

Rev:

-

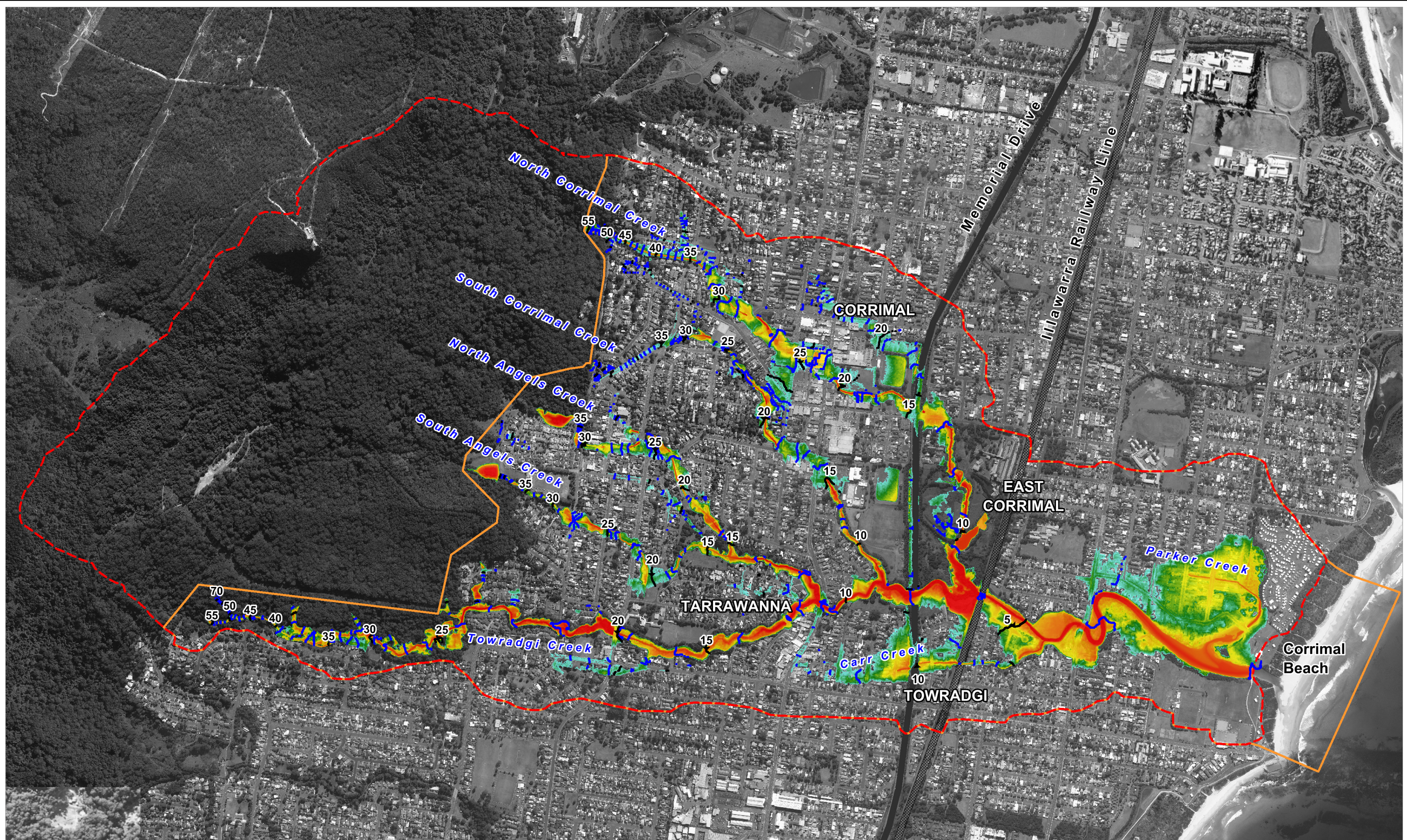


Filepath : S:\WATERPROJECTSS1291 - Water - Towradgi Ck Flood Study\Drafting\WOR\Figures\AppendixE\FigureE5\_100YR\_Depth\_Level.wor







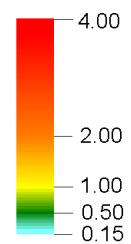



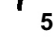



#### LEGEND

-  TUFLOW Model Boundary
-  Catchment Boundary

Peak Flood Depth (m)



-  5m Water Level Contour (m AHD)
-  5 Water Level (m AHD)
-  1m Water Level Contour (m AHD)

Title:

### Review of Towradgi Creek Flood Study Maximum Flood Depths and Water Levels: 0.5% AEP Event

BMT WBM endeavours to ensure that the information provided in this map is correct at the time of publication. BMT WBM does not warrant, guarantee or make representations regarding the currency and accuracy of information contained in this map.

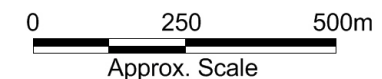


Figure:

E-6

Rev:

-

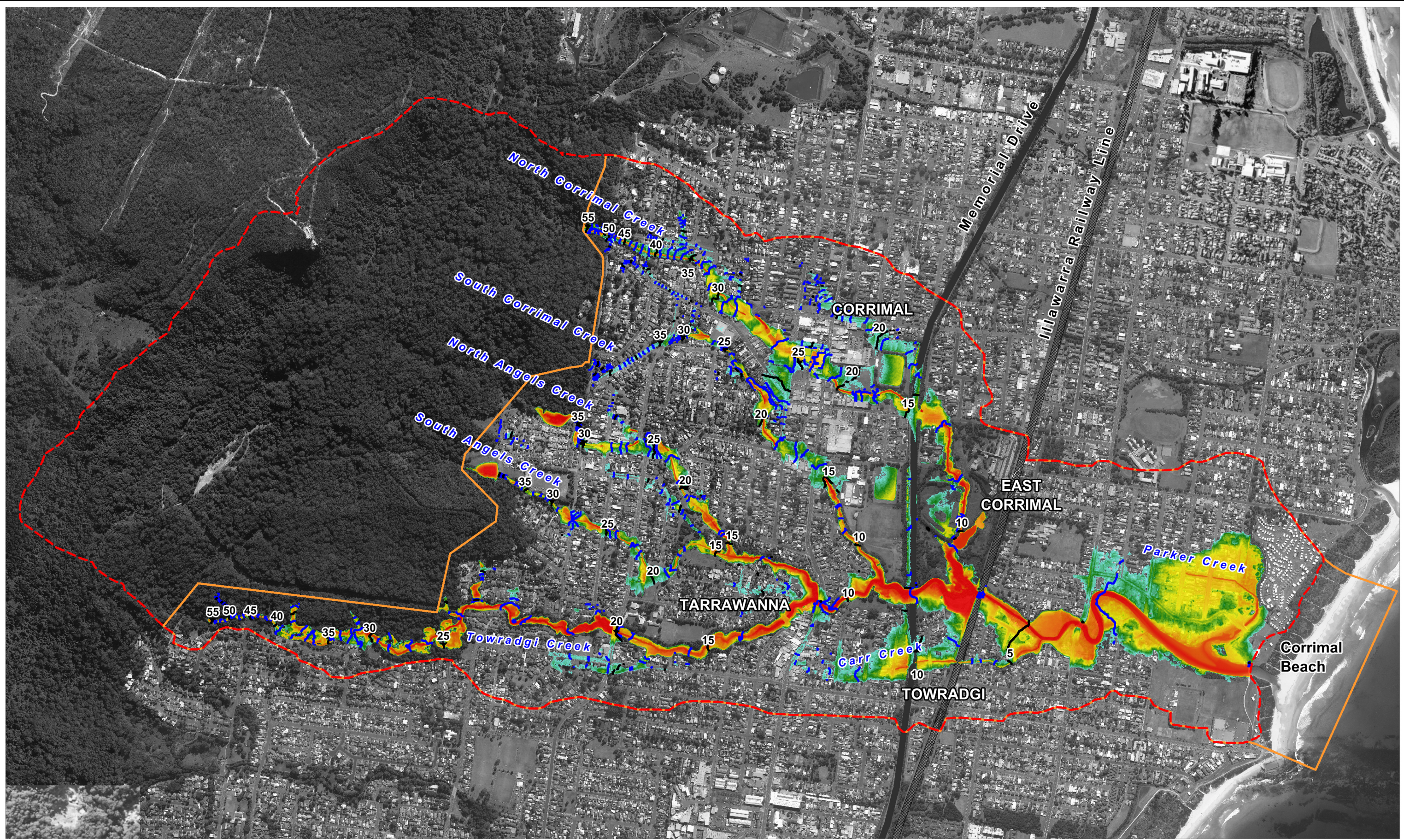


Filepath : S:\WATERPROJECTSS1291 - Water - Towradgi Ck Flood Study\Drafting\WOR\Figures\AppendixE\FigureE6\_200YR\_Depth\_Level.wor







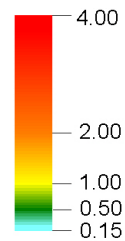



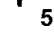



#### LEGEND

-  TUFLOW Model Boundary
-  Catchment Boundary

Peak Flood Depth (m)



-  5m Water Level Contour (m AHD)
-  5 Water Level (m AHD)
-  1m Water Level Contour (m AHD)

Title:

### Review of Towradgi Creek Flood Study Maximum Flood Depths and Water Levels: 0.2% AEP Event

BMT WBM endeavours to ensure that the information provided in this map is correct at the time of publication. BMT WBM does not warrant, guarantee or make representations regarding the currency and accuracy of information contained in this map.

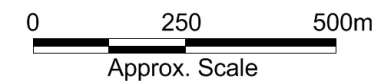


Figure:

E-7

Rev:

-

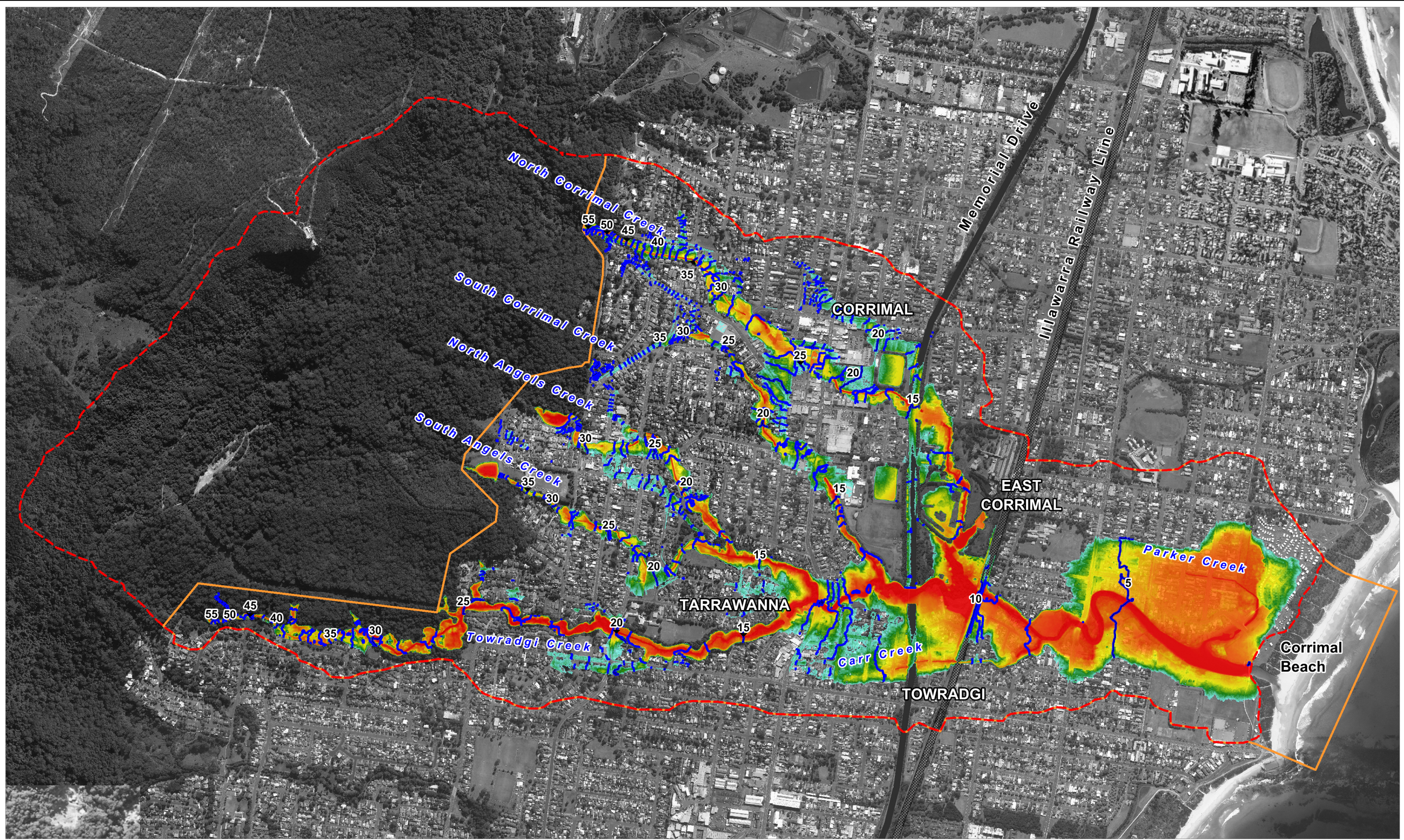


Filepath : S:\WATERPROJECTSS1291 - Water - Towradgi Ck Flood Study\Drafting\WOR\Figures\AppendixE\FigureE7\_500YR\_Depth\_Level.wor







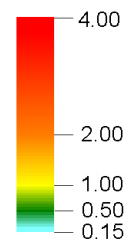






#### LEGEND

-  TUFLOW Model Boundary
-  Catchment Boundary

Peak Flood Depth (m)



-  5m Water Level Contour (m AHD)
-  1m Water Level Contour (m AHD)

Title:

### Review of Towradgi Creek Flood Study Maximum Flood Depths and Water Levels: PMF

BMT WBM endeavours to ensure that the information provided in this map is correct at the time of publication. BMT WBM does not warrant, guarantee or make representations regarding the currency and accuracy of information contained in this map.



0 250 500m  
Approx. Scale

Figure:

**E-8**

Rev:

-



Filepath : S:\WATERPROJECTSS1291 - Water - Towradgi Ck Flood Study\Drafting\WOR\Figures\AppendixE\FigureE8\_PMF\_Depth\_Level.wor



