

Important school zone parking signs



No Parking

PENALTY EXCEEDS \$201 + 2 Demerit Points

Stop here for up to two minutes to drop off and pick up passengers. You must stay within three metres of your vehicle at all times. No parking zones provide a safe place to drop off or pick up children.



No Stopping

PENALTY EXCEEDS \$362 + 2 Demerit Points

Do not stop here for any reason. No stopping zones keep sight lines clear for drivers and children. Drivers also must not stop at the side of a road marked with a continuous YELLOW LINE. This line means the same as no stopping.



Bus Zone

PENALTY EXCEEDS \$362 + 2 Demerit Points

A Bus Zone allows buses to drop off and pick up passengers safely.

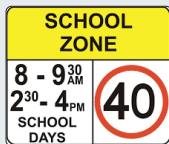


Children Crossing

PENALTY EXCEEDS \$603 + 4 Demerit Points

Orange children crossing flags and hand-held stop signs must be obeyed.

Stop on, approach too quickly or not give way to pedestrians. \$603 + 4 Demerit Points.



Speeding

Min Penalty exceeds \$211 + 2 demerit points

MAX PENALTY \$2778+ 7 Demerit Points

Speeding increases the chance of a crash resulting in severe trauma and injury. It's not worth the risk.



Running a Red Light

PENALTY EXCEEDS \$603 + 4 demerit points

You have run a red light if your vehicle crosses the white stop line after the lights turn red.

Here are a few safe crossing tips to keep in mind..

Look out before you step out

Stop! Look! Listen! and Think!

Always hold your child's hand



Your driving affects all road users so sticking to the rules and showing courtesy, respect and patience makes driving a better experience for everyone.

By working together we can help keep school zones safe for everyone.

Fines are current at time of printing August 2023. For full list of penalties and offences visit:

www.nsw.gov.au/driving-boating-and-transport/demerits-penalties-and-offences/offences/search-offences-and-penalties?page=1

Wollongong City Council

41 Burelli Street, Wollongong

Phone: (02) 4227 7111

Email: council@wollongong.nsw.gov.au

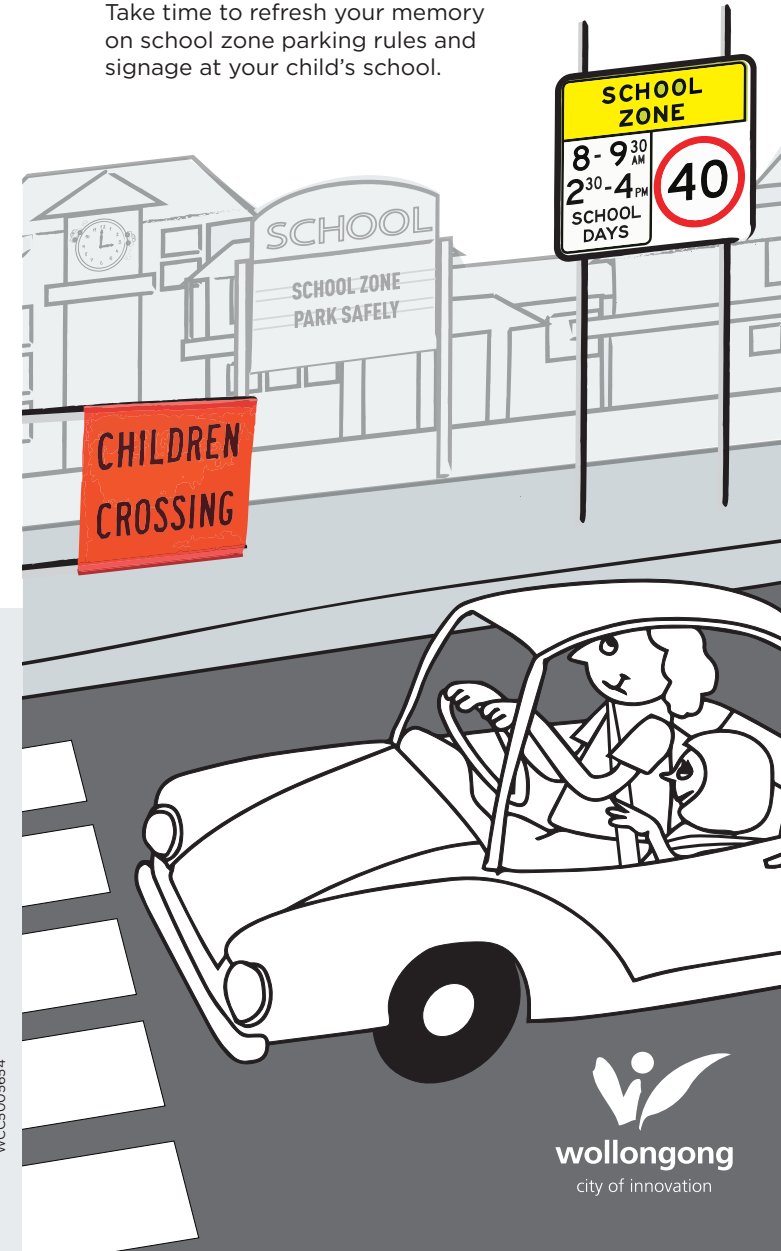


A road safety initiative as part of the Local Government Road Safety Program

School Zone Parking

GLOVE BOX GUIDE

Take time to refresh your memory on school zone parking rules and signage at your child's school.



WCC5 005654



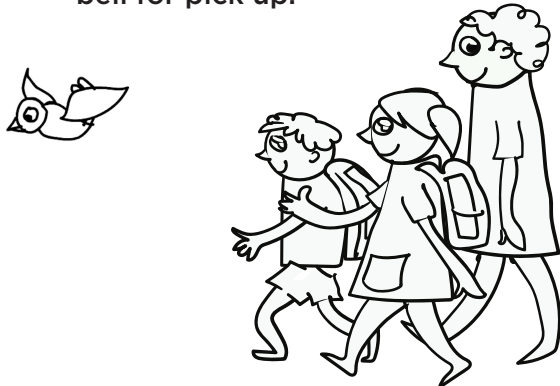
We all have a responsibility to keep each other safe.

Traffic rules and parking restrictions are there to improve safety around schools.

We all have a role to play in keeping children safe.

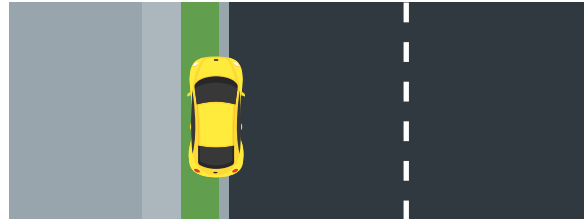
Next time you are in a school zone here are some simple tips to follow:

- ! **Waiting in the no stopping zone is illegal and unsafe.**
- ! **It's illegal and unsafe to stop on a children's crossing - even to let children out of a car.**
- ! **Don't queue for a spot. Drive around the block if you can't find a park.**
- ! **U-turns, three-point turns are dangerous, and it's safest to avoid reverse parking outside a school.**
- ! **Drop off and pick up children on the school-side of the road. The safest door on a car is the kerbside rear door.**
- ! **Help reduce congestion in the school zone; park a block from the school and walk. Or arrive 10 minutes after the bell for pick up.**



SCHOOL ZONE

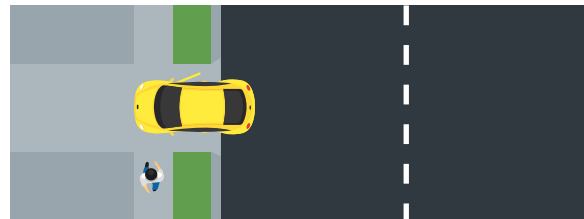
Common parking rules



No Stopping on path/nature strip

PENALTY EXCEEDS \$362 + 2 Demerit Points

Don't stop in these areas for any reason. Clear unobstructed paths improve safety for pedestrians.



Parking Across Driveways and Footpaths

PENALTY EXCEEDS \$362 + 2 Demerit Points

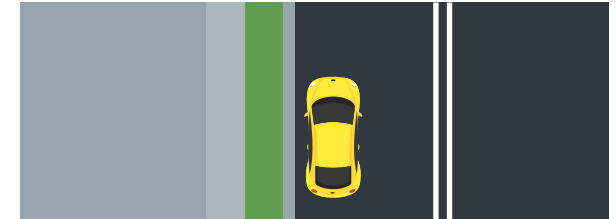
Don't stop across a driveway or footpath in a school zone, not even to drop off or pick up students.



Stopping in Intersections

PENALTY EXCEEDS \$481 + 2 Demerit Points

Don't stop within 10 metres of an intersection.



Double Centre Lines

PENALTY EXCEEDS \$362 + 2 Demerit points

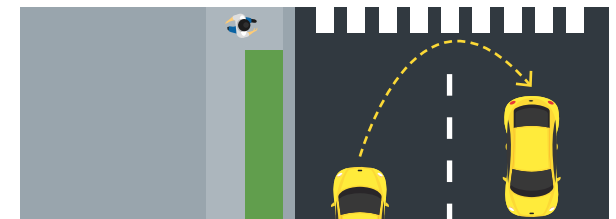
Don't stop your vehicle within three metres of any double centre lines.



Double Parking

PENALTY EXCEEDS \$362 + 2 Demerit Points

Don't stop on a road between the centre of the road and another vehicle that is parked at the side of the road, to wait or pick up or drop off passengers.



U-Turns

PENALTY EXCEEDS \$362 + 3 Demerit Points

You can be penalised for dangerous U-Turn's in a school zone.