

Neighbourhood Forum 5

Wollongong's Heartland



Coniston, Figtree,
Gwynneville, Keiraville,
Mangerton, Mount
Keira, Mount St
Thomas, North
Wollongong, West
Wollongong,
Wollongong City.

Agenda for e-meeting on Wed 5th August 2020 by email

- | | | |
|----|------------------|--|
| 1 | Presentation | None possible |
| 2 | Apologies | None necessary |
| 3 | Minutes | of meeting of 1st July and matters arising; see pp.17-19 |
| 4 | Comments | If you wish to object or comment on any of the recommendations in this agenda, please respond before the meeting date. |
| 5 | Responses | 5.1 Graffiti Management: see p.2
5.2 Responses to COVID-19 Action queries: see p. 2 |
| 6 | Reports | 6.1 Draft Disability Inclusion Action Plan 2020-2025: see rec p. 3
6.2 Draft Risk Management Framework; see rec p. 3
6.3 Draft Diversity, Inclusion and Belonging Policy: see rec p.4
6.4 Draft Climate Mitigation Action: see rec p.4
6.5 Draft Sustainable Wollongong Strategy: see p. 4 & rec p. 5
6.6 Draft Wollongong Cycling Strategy 2030: see p. 5 & rec p. 6
6.7 Pilot Cycle Routes: see rec p.6
6.8 Draft Wollongong Art Gallery Strategic Plan: see p.6
6.9 Picnic Shelters Galvin Park: see rec p. 7
6.10 Waste & Resource Recovery – Fees & Exemptions: see rec p.7
6.11 State Strategic Plan for NSW Crown Land: see p.7 & rec p.8
6.12 Height Controls: see rec p.8
6.13 Heritage Schedule Review; see rec p.9
6.14 Housing Strategy for NSW Discussion Paper: see rec p.9
6.15 Design and Building Practitioners Act see p.9
6.15 Food Organics & Garden Organics (FOGO) : see rec p.10 |
| 7 | Key Issues | 7.1 - 7.6 See pp 11-12 & rec p.12 |
| 8 | Planning | 8.1 - 8.8 See recs pp. 12-15 |
| 9 | General Business | |
| 10 | Snippets | see p.16 |

Next Meeting/Agenda: on Wed. 2nd September 2020.

Current active membership of Neighbourhood Forum 5 : 398 households

5 Responses 5.1 Graffiti Management:

We raised the issue of graffiti particularly near bus stops.

"I have discussed this issue with the Team managing the graffiti removal program. A new position is currently being trialled within City Works to assist with carrying out road condition assessment reports. To improve service in managing the issue of graffiti I've tasked this team member to include the main bus routes as part of his weekly inspections and identify any bus shelters that have been defaced. The officer will then advise the graffiti removal team for their action. This will commence from the end of July".

Manager City Works (Acting)

5.2 Responses to COVID-19 Action queries

- 1 Support the effective operation of the Audit Risk and Improvement Committee:
Query - why is this not being done now?
" Council has processes in place to support governance mechanisms such as oversight committees. This action was created to reflect changes to the audit and governance committees (two), now merged as one - the Audit, Risk and Improvement Committee. Council is actively working with NSW Cybersecurity to enhance the maturity of the organisation's information security. The development and implementation of an Information Security Management System aligned to National Institute of Standards and Technology (NIST) and International Organisation for Standardisation (ISO) 27001"
- 2 Conduct a skin penetration education and awareness campaign in partnership with NSW Health:
Query - what is the relevance of this to Council?
"Council has legal responsibilities under the Public Health Act to regulate premises conducting skin penetration activities such as ear piercing and tattooing. These premises are regulated through a combination of registration, inspections by Council's Environmental Health Officers and through education and awareness raising activities."
- 3 Design and construct a boat storage shed for North Wollongong Surf Life Saving Club:
Query - Any further information on this project?
" As part of the downstairs refurbishment of North Wollongong SLSC in 2020/21 and 2021/22 only essential rescue craft will be retained within the existing building. An alternative location for a prefabricated storage shed for the club's other equipment will be constructed away from the North Wollongong beach precinct."

Corporate Strategy Manager (Acting)

6 Reports

6.1 draft Disability Inclusion Action Plan 2020-2025

5th August

The draft Disability Inclusion Action Plan 2020-2025 describes what Council will do in the next 5 years to make Wollongong a more inclusive and accessible place. Its provisions are commendable and unexceptional.

Recommendation

That a submission of support be lodged.

6.2 Draft Risk Management Framework

3rd August

On 29 June Council resolved to adopt a Risk Appetite Statement and to exhibit a draft Risk Management Framework document. Apparently Council has an internal management policy and it is now proposed to adopt a Council level policy, in line with an Office of Local Government discussion paper. Both documents appear well researched and sound. The adopted Appetite Statement includes that a key element in achieving a balanced approach is to ensure the avoidance of a risk averse culture which stifles growth, transformation and innovation rather than supports it through the correct assessment and management of risks.

This is most welcome, as perceptions arise at times that risk aversion can prevail over risk management, to the detriment of outcomes for the community. There are four risk appetite categories and a very useful table provides details, ie Minimal risk appetite (for Council's People & Safety and Governance categories), Cautious (for Environmental, Financial, part Information Technology and Reputation), Open (for Infrastructure, Service Delivery and part Information Technology), and includes examples of what Council will and will not tolerate.

A diagram shows examples towards achieving the fourth category ie Risk Positive. The Risk Management (RM) Framework document is one of the four key elements in Council's RM approach, ie RM Framework; R Appetite; RM Plan; RM Policies & Procedures and says it is consistent with the accepted Australian Risk Management Standard. Its steps are to: Identify and analyse main risks; Evaluate; Implement control/management systems; Treat unacceptable risks; Document processes; Monitor, communicate & review, which seems to be a proven reliable approach.

Recommendation

That Council be congratulated on the risk documentation and it be noted that the focus is on risk management rather than risk aversion.

John Riggall

6.3 Draft Diversity, Inclusion and Belonging Policy

5th August

The Policy will support and guide a culture of diversity and inclusion at Council, in the way staff work and are supported as well as the services provided to the community. Unfortunately it comprehensively fails to recognize the contribution that could be garnered by Council from so many people in the community with specialist knowledge to inform and contribute to activities and policies. It also fails to recognize the ongoing commitment of the Neighbourhood Forums to relating community attitudes and experience on a range of important issues.

Recommendation

That a submission be made in terms of this report.

6.4 Draft Climate Mitigation Action Plan

12th August

The draft Climate Change Mitigation Plan 2020-2022 is a commitment to reduce emissions from Council operations and for the City of Wollongong to move towards becoming a low emissions city.

This is another massive and comprehensive report with entirely acceptable proposals and exhortations at a strategic level. Unfortunately it fails to recognise a basic and remediable action which Council could, and ought to a long time ago, implement. It has been raised so often one does not know how to get the message across. Council's planning regime should no longer promote medium density development in areas remote from services and public transport as this is quite unsustainable in social (it is ruining the integrity of many streetscapes), economic (it requires residents to travel much further, and sometimes more often, than they need) and environmental (extra travel generates extra greenhouse gasses) terms.

Recommendation

That a submission be made in terms of this report.

6.5 Draft Sustainable Wollongong Strategy

12th August

The Draft Sustainable Wollongong: A Climate Healthy City Strategy has been developed to focus on environmental sustainability priorities and provide direction for Council's operations. This is yet another massive and comprehensive report with entirely acceptable proposals and exhortations at a strategic level. Unfortunately it fails to recognise two basic and remediable actions which Council could, and ought to a long time ago, implement.

First, as noted in 6.5 above, its planning regime should no longer promote medium density development in areas remote from services and public transport. Secondly, its planning regime should no longer promote fragmentation of urban vegetation at the rear of new development but require it to be integrated into street connectivity.

Recommendation

That a submission be made in terms of this report.

6.6 Draft Wollongong Cycling Strategy 2030

17th August

This draft Strategy is most welcome. It includes laudable aims including that it "works towards a 10-year vision where cycling is a preferred option for transport in our community". Recent media publicity promotes Wollongong as "A Cycling Mecca, and the report to Council says it marks a clear turning point in Council's vision for bike riding across Wollongong for our community". Hopefully this will be achieved. The five priority areas are safety, convenience, planning, promotions, innovation.

It is a glossy generalised document to replace the 2014-2018 Bike Plan, which was very comprehensive with much relevant information such as traffic counts to help determine priorities, but fell down in the Action Plan section. A progress report on Actions over the past 6 years is not available from Council, nor are updated traffic counts, but it is obvious that progress has been poor, and this is acknowledged in this Strategy. Unfortunately the new Action Plan also lacks details to enable tracking and evaluation of performance. It seems that in a number of instances standards created 30 years ago have not been followed.

The Strategy includes that "Our community have told us their priorities for cycling are:

1. Dedicated cycling infrastructure, separated from pedestrians and cars;
2. Off-road shared paths and on-road routes with low traffic volumes and speed;
3. Better connectivity, particularly between existing and new cycling routes; and
4. Improved access to our town centres, particularly around and through Wollongong's City Centre."

A recent copy of the updated Infrastructure Delivery Program for 2020-2024 shows minimal funding for community priorities 1 & 2, but it does include funding for 3 and 4, and funding has increased by \$740,000 (5%) over the next 4 years from the advertised draft Program, and it is understood that funds will increase if/when grants are received.

There seem to be many high priorities missed in the draft Strategy for improvements to cycling facilities and safety in the NF5 area. For example linemarking, -links to Lang and Stuart Parks and from the city to UOW..

Recommendation

that the executive compile and make a submission on the Strategy.

John Riggall

6.7 Piloting Cycle Routes

31st August

An article in the Mercury on 30 July revealed that Council is inviting comments on their proposal to rearrange road space in Smith St, making it one way, to provide cycling routes that are separated from vehicles. Unfortunately NF5 was not notified, which is unusual and particularly considering there has been communications as recent as 29th July with council's traffic section staff about the NF5 agenda item re the draft Cycling Strategy.

A search of Council's website includes that this project is one of four funded by TfNSW Fast Tracked Roadside Public Spaces Program & WCC. The draft Cycling Strategy includes Action Item 3.5, "Develop the City of Wollongong Integrated Transport Strategy and associated Supporting Documents. Timeframe: 2 years". But Action item 3.4 is: "Develop and Trial projects that re-allocate road space across the city for alternative transport modes other than private vehicles, Timeframe: 1 year; ongoing". This seems to be a "cart before the horse" situation.

It is widely accepted practice for an Integrated Transport Strategy & Action Plan to be developed and adopted before considering such a radical (for Wollongong) proposal as making one of the major CBD streets one way.

Recommendation

That WCC Director Infrastructure and Works be requested to arrange a meeting with NF5 Executive to discuss Council's proposed pilot projects, including Smith St becoming one way traffic for vehicles.

6.8 Draft Wollongong Art Gallery Strategic Plan

The draft Wollongong Art Gallery Strategic Plan Framing Our Future has been developed through extensive consultation with the community and other key stakeholders over several years. The Plan aims to guide the Gallery over the next five years to enhance the cultural and creative experience in Wollongong to ensure it remains relevant to our community, the arts and to contemporary life.

6.9 Picnic Shelters Galvin Park

Frequently family groups have completely taken over the BBQs in the Park so that they are not able to be used by any other member of the public. This is a constant problem. This means that even groups stationed at the picnic shelter alongside the BBQs cannot use them.

Ruth Freeland

Recommendations

That Council be requested:

- 1 to erect large signs be attached to the shelters in a number of languages that clearly state that the BBQs are to be used for cooking purposes only - and are not to be parked at by groups;
- 2 to build further BBQs in Stuart Park south of Restaurant and near the existing shelters.

6.10 Waste and Resource Recovery – Fees and Exemptions

10th August

On 29 June Council resolved to exhibit the draft revised WARR Fees and Exemptions policy. It includes reinforcing that waste from authorised Local Community Service Organisations is required to be sorted and recycled so that the residual waste can continue to be disposed free of charge at Council's Whytes Gully tip. It is understood that discussions have occurred with the organisations, and that Council will work with them on the development and implementation of individualised Waste Management Plans.

John Riggall

Recommendation

That Council be congratulated on the draft Waste and Resource Recovery Fees and Exemptions Council Policy which retains residual waste fee exemptions for eligible Local Community Service Organisations, subject to conditions, and funds development of their individualised Waste Management Plans.

6.11 State Strategic Plan for NSW Crown land

20th August

The draft State Strategic Plan for Crown land sets the vision, priorities and overarching strategy for the management of Crown land for the next ten years. The Plan claims to have been developed with key stakeholders, council, peak bodies, government agencies, Aboriginal bodies and Crown land managers.

However, there are many concerns that it will further expand and entrench opportunities for privatisation of Crown (public) land in NSW.

This follows the Crown Land Management Act 2016 replacing the Crown Lands Act 1989, without an exposure draft, ignoring over 600 opposing submissions, and a few months after the Auditor General's scathing report exposing mis-management of sale & lease of Crown Land

Moreover, the much-vaunted Community Engagement Strategy excludes engaging residents for Crown Lands managed by Councils. The State Plan includes that "The priorities and desired outcomes of this plan call for an ambitious transformation of the administration of Crown lands in NSW". But the privatisation threat is in the statement by Minister Pavey:

"One of our priorities has been identifying opportunities to create jobs and economic opportunities for our regional communities. We can use Crown land to provide housing and employment, support growing populations in regional towns, and take some of the pressure off our populated urban areas. The land can also be used to attract investment and create jobs in export-orientated manufacturing, energy generation, and new and emerging industries."

One of the four priorities is to "Facilitate Investment on Crown Land" by promoting investment, making it easier for potential investors to locate prospective sites, providing longer term leases and generating commercial returns for developers. Obviously the potential losers are the NSW public.

John Riggall

Recommendation

That a submission be made expressing concerns that the draft State Strategic Plan for Crown land appears to further facilitate privatisation and the alienation of public access for Crown land created many years ago with foresight for the people of NSW to use.

6.12 Height Controls

In 2015 the NF 5 City Centre Group considered a report (available on request) which set out and quantified a number of scenarios on how to combat the quite unacceptable urban design environments being created by ignoring the existing streetscape in favour of one with much higher buildings in, maybe, 50 years time. Crucial is the transition. As a result they adopted a policy, and whilst this does not appear to have been formally adopted by the Forum, it has been used ever since.

Recommendation

That the Forum adopt a policy which requires that new residential development cannot be such that there is more than four storey's difference in height between it and either adjoining property.

6.13 Heritage Schedule Review

19th August

Council is proposing to amend its controls over Heritage, primarily of administrative issues. There a dozen or so sites in our area which are affected, virtually all either to extend the area covered by the item or to define it properly. The only exception is the monument at 1, Smith St. (corner of Harbour) where the existing item covers most of the site whereas the amendment only covers a small area around the actual (invisible) monument.

Recommendation

That a submission in support of the changes be lodged.

6.14 Housing Strategy for NSW Discussion Paper

24th July

Decent housing for all is a fundamental human right. Whilst NSW seems to be being better than most we still have a current deficit of over 200,000 dwellings, a matter of grave concern. The paper is strong on analysis, directions and action areas including:

- 1 Fair Go for First Home Buyers
- 2 First Home Loan Deposit Scheme
- 3 Residential Tenancies Act 2010
- 4 SEPP's on Affordable Housing
- 5 Future Directions for Social Housing
- 6 Social Housing Community Improvement Fund
- 7 Homelessness Strategy 2018–2023
- 8 Inclusionary zoning.

However, the paper does not attempt to assess or calculate the actual impact of any of these measures towards eliminating the deficits whilst catering to new growth in demand. Even if the Governments, both State and Federal, commit to providing the legislative fiscal arrangements and the enormous funding needed, it is very uncertain which programs are the most effective, still less how much it will cost.

Recommendation

That the submission made in terms of this report be endorsed

6.15 Design and Building Practitioners Act

The Act is now partly in force with the rest due to take effect as of 1 July 2021. The three major changes as a result of this new legislation are:

- 1 builders, designers, product manufacturers and suppliers, and supervisors now owe a duty of care to the building owners, which cannot be delegated or contracted out of;

- 2 there is increased scope of powers given to the Secretary of the Department of Customer Service for compliance and enforcement
- 3 a registration and certification process for design practitioners, professional engineers, specialist and building practitioners.

6.16 Food Organics and Garden Organics (FOGO) Collections

Some single unit dwelling (SUD) households have actively participated in Council's thoroughly successful FOGO trial over the past 9 months. Council have now decided to introduce a FOGO collection service for all SUD citywide, starting in November 2020. This will enable residents in all SUD households to use kitchen caddies and compostable liners provided by Council to collect their food waste and put it into their existing garden waste (green lid) bins, that will be collected weekly.

The FOGO material will be composted by Council's existing reliable local contractor. Residual waste (red lid) bins will still be collected weekly, and co-mingled Recyclables (yellow lid) bins will still be collected fortnightly. The first two years will be funded from Council's domestic waste reserve, progress will be monitored and reviewed. Council is applying for a Government grant to plan and conduct a one year FOGO trial in 1,500 multi-unit dwelling households.

Council's responsible manager advises the SUD FOGO service will divert from landfill an estimated 6,000 tonnes per year of red lid bin food waste. Benefits include to reduce costs of landfill, save on the government's waste levy, extend the life of Whytes Gully tip, reduce greenhouse gases, and provide compost for established markets. It is understood that a longer lead time had been planned to introduce the FOGO system for SUD, as experienced by many of the 40 NSW Councils that provide a FOGO service, but Covid 19 restrictions have contributed to the decision to intensify the communication and education strategy into a 4 month program for SUD residents.

The FOGO service for all SUD is most welcome and hopefully residents will quickly get into the routine of using the system weekly, so that significant environmental benefits will be achieved.

John Riggall

Recommendation

That Council be congratulated on introducing a FOGO service for Single Unit Dwellings.

7 Key Issues 7.1 City Centre

Covered in the City Centre Review - awaiting outcome.

7.2 High Rise Residential

It is good to see the upgrade of landscaping and garden presentation especially around the sea front.

However, other matters need to be considered:

- 1 WCC has obtained substantial additional rating in the High Density area because of the multiplication of rates based on the minimum rating imposed on individual strata units;
- 2 WCC has received substantial income from the section 94A contributions. The most glaring examples are obviously the lack of increased open space and amenities to improve the environment in and around the High Rise area. (and don't say the decorative slabs in the CBD). Where are the road improvements, public open space additions and other embellishments? The question is where have the public improvements that one would expect for an increased and more concentrated population been made. Is the inner city area yet again subsidising other areas?
3. Does Council have an Improvement Strategy for the High Rise Area which is more and more becoming the homes for younger couples often with young children, with a more concentrated population? If Government strategies are encouraging, if not directing, High Rise buildings in and around railway stations as transport hubs, where are the amenities to attract people to come and stay?
Where are the strategies and surrounding improvements to prevent High Rise buildings in the future becoming the centre of ghettos, slums and trouble areas? It should be remembered that nice areas to live in are nice areas to visit.

Harold Hanson

Recommendation

Council be requested to advise:

- 1 what has been the increased return from the R1 Residential zone over the past 5 or 10 years from multiple dwellings in high rise flats compared to houses of the same value, and from section 94A contributions;
- 2 what additional facilities and/or services have been provided as a result?
- 3 what is Council's Improvement Strategy to avoid the risks mentioned above and to accommodate the pressure from an increased concentrated inner population.

7.3 Medium Density development

Review now proposed and our Locality Plan policies are to be taken into account.

7.4 Keiraville-Gwynneville.

Should NF5 give support to the Local Members and WCC calling for an urgent start and completion to the Mt Ousley overpass as part of the stimulus package - before anyone else is killed? Consider the impact of mining (Regions grants) and the transporting of vehicles from Port Kembla, with the increasing truck movements; and the stated safety improvements.

Council has adopted the Fairy Creek Flood Study. It is a little disappointing that the report to Council did not make recommendations for flood mitigation works as per the 2009 report or additional issues identified in the reports particularly around the delta and Gwynneville/Keiraville. Specifically, the report highlighted the issues raised by the community but made no commitment to investigate or consider the comments from the community. It is noted that many of the 2009 works were never done.

Ian Young

7.5 South Wollongong:

Issues remain around the pollution from the old builders tip with calls for it to be remediated. This could involve removing contaminated material to another site, which could be at great expense and prompt objections from the receiving areas.

7.6 Environment

All quiet on the green front save 6.5 and 6.6 above.

8 Planning

8.1 Please note that whilst the review and recommendations relating to each development application have been prepared with all due care and objectivity, no legal responsibility is accepted for errors, omissions or inadvertent misrepresentations, nor for any outcomes which might result from the assessments.

8.4 DA/2020/614 16 units in 5 stories 16-18 Market St, W'gong 14th July

This is a proposal for 16 units in a five storey building which is out of scale with the Heritage Area despite a backdrop of higher buildings. It does not comply with requirements for: site width; building setbacks; maximum building depth; private open space; overshadowing adjacent residential building; nor sunlight to living rooms. It represents overdevelopment of a sensitive site.



Recommendation

That the submission of objection be endorsed.

8.3 DA/2020/645 Dual Occupancy, 39 Rosemont St, W. W'gong
20th July

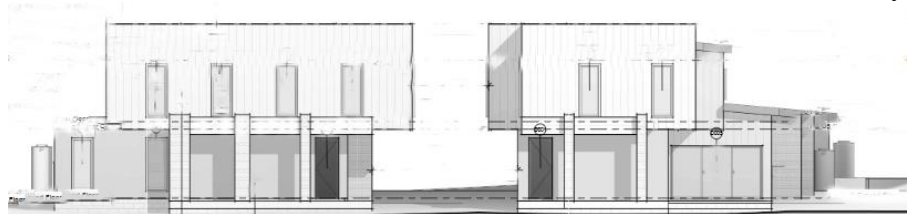
This is a proposal for an attached dual occupancy across the front of the lot. It seems to comply with all Council requirements and with our Locality Plan for Fairy Creek. However, the elevation is in contrast to others in the street and ought to be subject of review by the Design Review Panel



Recommendation

That the submission of support, subject to review of the front elevation, be endorsed.

8.2 DA/2020/632 8 houses 14 Acacia Ave Gwynneville
22nd July



This is a proposal for two terraces of four units each, all two storey, on two large lots. It seems to comply with all Council requirements although the brutal style of architecture clashes with the rest of the street. The area is relatively remote being three-quarters of a kilometre away from shops and services, to this extent it does not comply with our Locality Plan for Fairy Creek

Recommendation

That the submission of objection be endorsed.

8.5 DA/2019/1356, 14 units 9-11 Park St Wollongong
24th July

This is a revised proposal for 14 units (rather than 15) in an 8 storey building over car parking to which we objected in January. A significant number of relatively minor changes have been made but it still does not comply with several Council numeric standards. Moreover, it remains a blight on the streetscape and the entry and lobbies are pokey and uninviting. It adjoins single storey house and 2 storey units, in a street of mainly 3-5 storey units, and so is quite out of scale with street and does not comply with our height streetscape policy.



Recommendation

That the submission of objection be endorsed.

8.8 DA/20/677, two 17 story Mixed Use bldgs, 30 Ellen St. W'gong
29th July



This is a revised proposal for two 17 storey towers at right angles to each other on the north side of Ellen St between Kenny and Atchison Sts. They comprise basement car parking, a supermarket and cafes on the ground floor, commercial parking on the next, a child care centre and offices above that separating the towers which comprise 78 one bedroom, 191 two bedroom and 4 three bedroom units. A somewhat similar proposal, but with only 203 units, was approved by the Regional Panel in 2017. It seems effectively to comply with all Council requirements.

Recommendation

That the submission of support, which queries the apparently black facades, be endorsed.

\\
\\
\\

8.7 DA/2020/620 Major Events J.J.Kelly Park, Wollongong
29th July



This is a proposal to permit temporary major events to a maximum of 52 days in any 12 month period.

Recommendation

That the submission of support be endorsed.

8.8 DA/2020/622 Major Events Greenhouse Park, Wollongong
29th July



This is a proposal to permit temporary major events to a maximum of 52 days in any 12 month period including camping in association with events. Access includes a pedestrian/cycle bridge, which is currently closed, to Port Kembla Road.

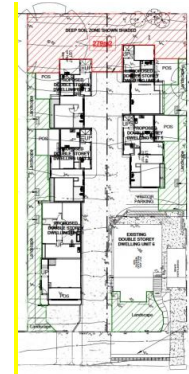
Recommendation

That the submission of support, subject to the opening of the pedestrian bridge, be endorsed.

8.6 DA/2020/712 5 units 28-30 Figtree Cres Figtree

10th August

This is a proposal on two large house lots, with one house to be demolished, and five units of two-three stories constructed. It seems to comply with all Council requirements save the limit to two stories. These are relatively minor infringements being mostly caused by laundries or garages half below ground level. The back yard is timbered, as are a row on either side, and includes a number of Bangalow Palms in good condition. The site abuts but is outside the transition zone in our Figtree Locality Plan.



Recommendation

That no submission be made.

8.7 DA determinations as notified from 1st July 2020

DA no. 20../...	Suburb	Address	Proposal	Forum Rec	Result Authority
19/874	Keiraville	6, Bulwarra St	4 town houses	Object	Approved Court.
19/1008	W'gong	1 Smith St	8 storey flats	Object	Refused Panel

9 General Business

Next Meeting/Agenda: on Wed. 5th August 2020

10 Snippets

Killing the rat-run

The increasingly common use of real-time traffic information by drivers seeking to avoid jams has provided a group of residents in Brussels with a way of calming their local road, which had become a rat-run for commuters. They managed to switch on a total of 228 mobile phones in the street, which promptly gave drivers the message that it was extremely overcrowded. The ruse worked so well that the residents were able to have a street barbecue!



A Berlin-based artist has had the same idea. He has taken to strolling down usually busy roads with a plastic handcart filled with 99 smartphones, all connected to Google Maps. He usually has the street to himself.



In 2005, a traffic campaigner came up with the idea of ‘folk traffic calming’ using art installations to make roads in Oxford safer. What he described as ‘roadwitches’ included an 11 foot-high rabbit, a big bed (for a sleeping policeman), a casualty-style fake crash scene for Halloween, and a living room in the middle of the road intended to give the message that ‘We live here’.



Initially the street was legally closed to allow the setting up of this, but was then re-arranged to allow traffic to pass through. However, drivers were not amused!



Paul Burall

By the way, now you know why some snail mail is so slow!



Neighbourhood Forum 5

Wollongong's Heartland



Coniston, Figtree,
Gwynneville, Keiraville,
Mangerton, Mount
Keira, Mount St
Thomas, North
Wollongong, West
Wollongong,
Wollongong City.

Minutes from e-meeting on Wed 1st July 2020 by email

- 1 Presentation None possible. The executive will action, as necessary, the recommendations accepted in these minutes.
- 2 Apologies None received.
- 3 Minutes of meeting of 3rd June were adopted.
- 4 Comments None received.
- 5 Responses
 - 5.1 **Urgent Issues:** noted
 - 5.2 **Information on building sites:**
It was agreed that:
 - 1 Fair Trading NSW (Building Professionals Board) be requested to advise whether or not they follow Council procedures to ensure that the relevant information required within the development consent is appropriately displayed by certifiers and if not why not.
 - 2 Council be requested to ensure that complying development certificates include confirmation that all Council procedures, such as on-site notification, are in place to ensure that they have been complied with.
 - 5.3 **Planning Proposal Terrie Avenue** - noted
- 6 Reports
 - 6.1 **Certified Assessments** - noted
 - 6.2 **DA pamphlet** - adopted
 - 6.3 **Strata Law:**
It was agreed that Council be requested to sponsor education courses for strata owners.

6.4 Transport

It was agreed that the Forum write to local MPs Ryan Park and Paul Scully noting the reply of TfNSW and whilst appreciating the advice provided, seek an answer to the question as to why Newcastle and Canberra lines are being favoured with further studies, and will tenders be called for studies for the South Coast and Central West line, also will the NSW Government actually release the McNaughton report and when will Wollongong be likely see the promised increase in the number of both peak hour and off peak services, and more information on the scope of work announced by Minister Constance, and will it include high speed turnouts at Waterfall.

6.5 Installation at North Beach:

It was agreed that Council be congratulated on this installation

6.6 Greener Places Design Guide:

It was agreed that:

- 1 a submission be made to Council re-iterating our position, given the Government Architects Guide which has been enthusiastically endorsed by the Minister;
- 2 a submission be made in response to the guide endorsing its recommendations and suggesting that they include reference to the location of deep planting areas.

6.7 Local Strategic Planning Statement:

the urgent submission to Council, councillors and relevant senior staff was endorsed which requested that:

- i somewhere in the housing, sustainability and/or climate change sections there must be a statement which restricts increased densities in areas remote from services;
- ii the greening strategy must require the improvement of ecological continuity by integrating deep planting areas on private property with planting on the streets;
- iii development close to the escapement must be restricted to reduce the increasing risk from unstoppable bushfires;
- iv increased truck movements to Port Kembla must be curtailed until there is a commitment to the Maldon-Dombarton rail link;
- v the urgent (short-term) need to revise the Waste and Resource Recovery Strategy.

Outcome:

The Statement was adopted without debate. It would appear that Ward Councillors and staff believe that these issues are covered by the goals and aspirations of the Statement, which are indeed admirable.

However, their omission:

- i significantly weakens Council's ability to put pressure on the State Government in relation to those of their actions and policies which run counter to Council's aspirations;
- ii does not give sufficient direction to changes in Council's policies and programs on climate change, as is glaringly

evidenced by their draft Sustainable Wollongong Strategy and draft Climate Mitigation Action Plan, adopted at the same meeting, nor its Waste and Resource Recovery Strategy.

The executive is seeking a meeting with the General Manager to establish Council's future action program on these issues.

- 7 Key Issues 7.1 **City Centre:** noted
- 7.2 **High Rise Residential:**
It was agreed that Council be requested to advise what has been the increased return from the R1 Residential zone over the past 5 or 10 years from dwellings in high rise flats compared to houses of the same value, and from section 94A contributions and what additional facilities and/or services have been provided as a result?
- 7.3 **Medium Density development:** noted
- 7.4 **Keiraville-Gwynneville:** noted
- 7.5 **South Wollongong:** noted
- 8 Planning 8.2 **DA/2020/339 Dual occupancy 103 Murray Park Rd, Figtree**
It was agreed that the submission of objection be endorsed.
- 8.3 **DA/2020/528 20 storey hotel 357-9 Crown St Wollongong**
It was agreed that the submission of objection be endorsed.
- 8.4 **DA/2020/339 Dual occ 81 Redgum Forest Way, Figtree**
It was agreed that the submission of objection be endorsed.
- 8.5 **DA/2020/506 Dual occupancy 8 Vickery St Gwynneville**
It was agreed that the submission of support be endorsed.
- 8.6 **DA/2020/535 17 storey mixed complex 383 Crown St W'gong**
It was agreed that the submission of objection be endorsed.
- 9 General Business
- 9.1 **Toilets in the City Centre**
It was noted that toilets are very important as public amenities and there is a paucity of adequate public toilets in the City Centre.
It was agreed to draw to the attention of Council:
- i the degrading condition of sub-standard toilets near Wollongong City Surf Club and at Brighton Beach.
 - ii that there are no public toilets in the City other than in the old and new Town Hall both of which have restricted hours.
 - iii the need to consider requiring toilets to be provided in standalone large and popular supermarkets such as Aldi or Woolworths.

Next Meeting/Agenda: on Wed. 5th August 2020.