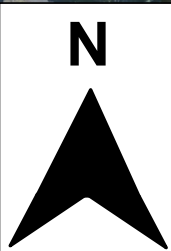
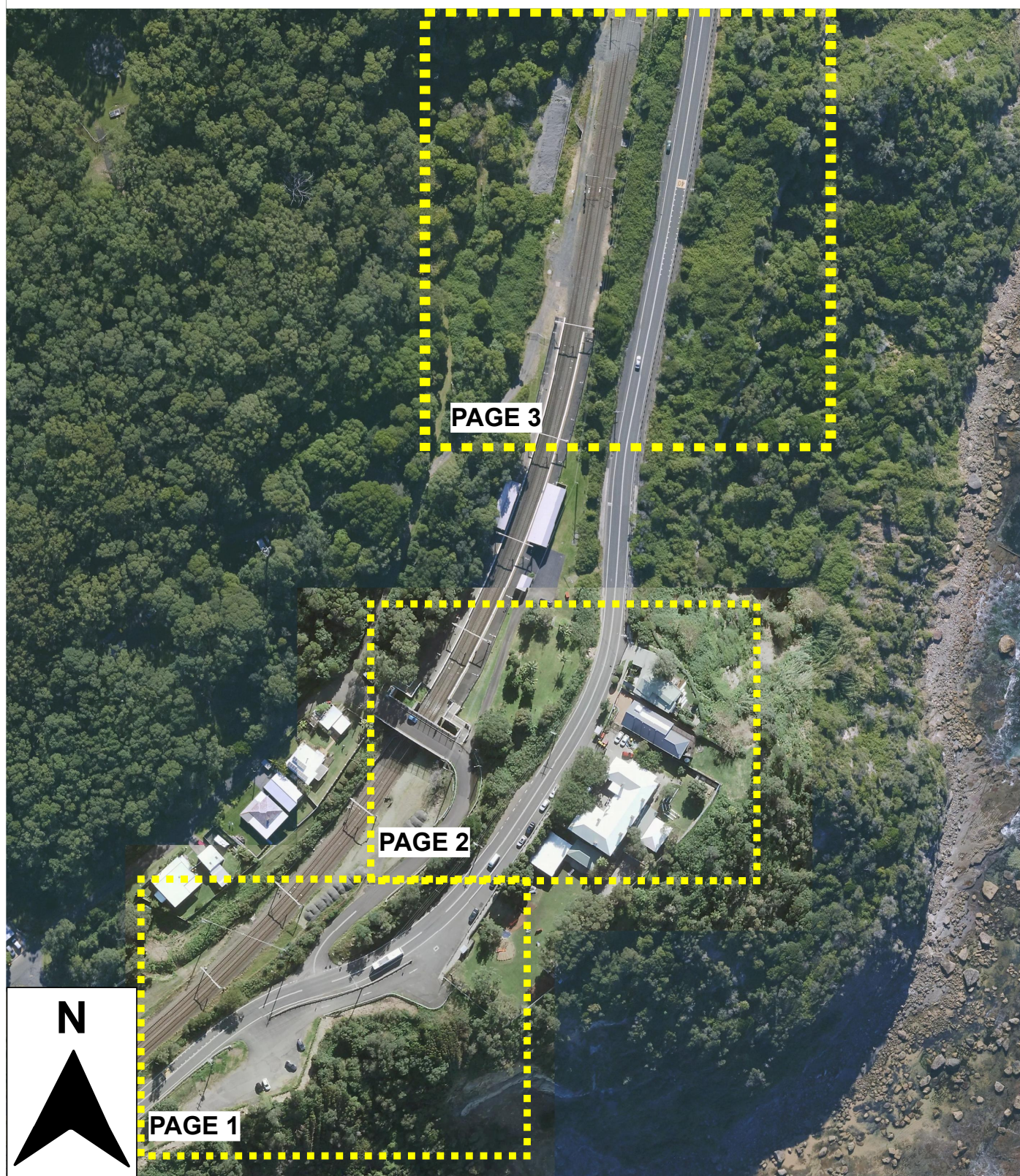


All line marking to be installed in accordance with Transport for NSW Delineation Guidelines
All signage to be installed in accordance with AS1742.2



PAGE 1

PAGE 2

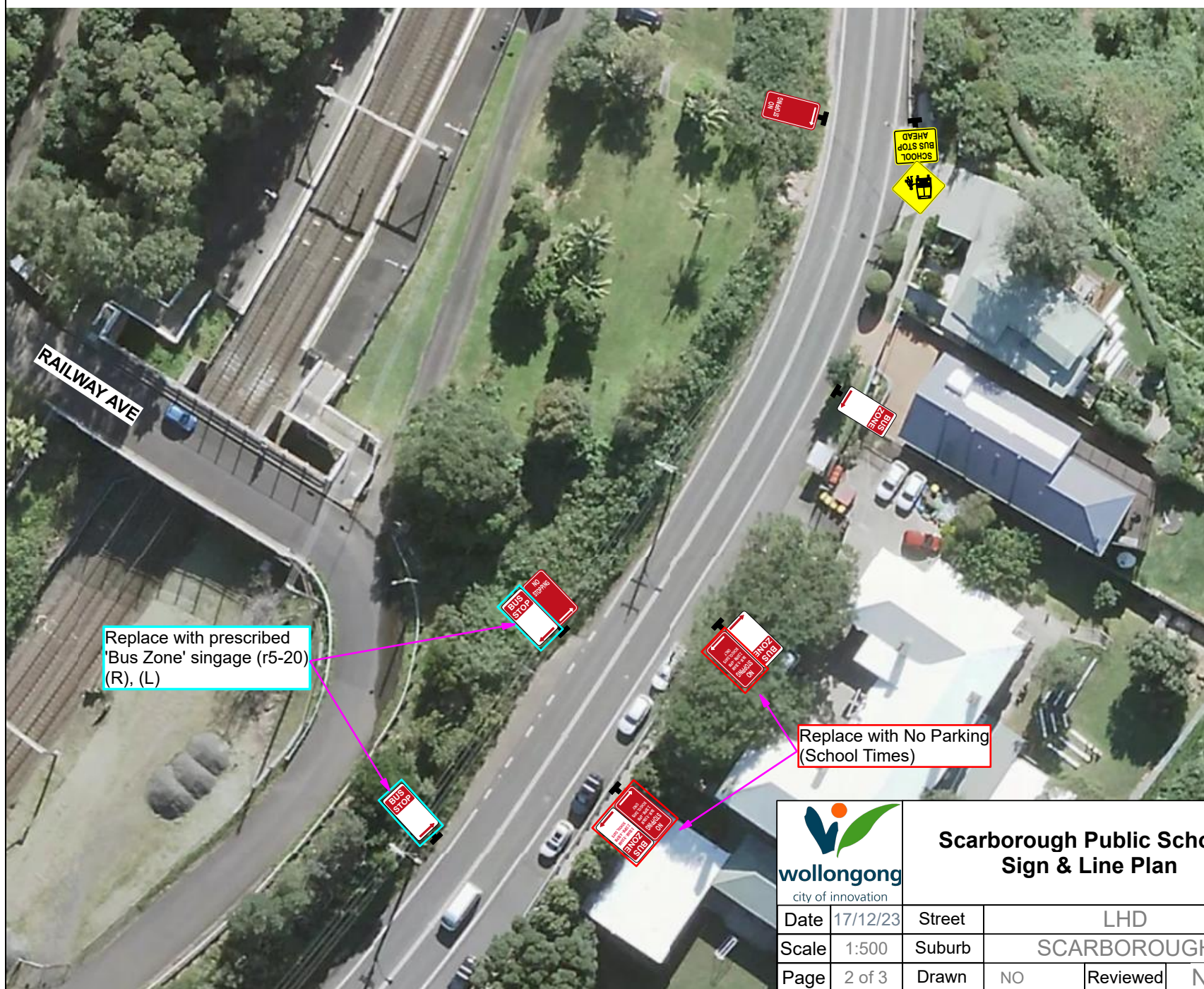
PAGE 3



Scarborough Public School Safer Routes to School Sign & Line Plan

Date	17/11/2023	Street	Various			
Scale	1:500	Suburb	Scarborough			
Page	Title	Drawn	NO	Reviewed	N/A	

All signs and lines illustrated in the following pages are current as of the date shown on the plan. All signs and lines moving forward are to be designed in accordance with best practice guidelines of the time. All sign locations are approximates only.



All line marking to be installed in accordance with Transport for NSW Delineation Guidelines
All signage to be installed in accordance with AS1742.2

LEGEND

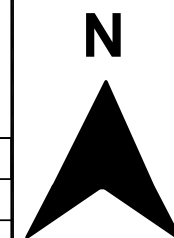
- Bus Zone (r5-20)**
- Bus Zone Times Specified (r5-20)**
- Bus Stop (r5-20)**
- No Stopping Times Specified (L)(R) (r5-403)**
- No Stopping (L) (L-R) (R) (r5-400)**
- School Bus (w8-204)**
- School bus stop ahead (w8-213)**



Scarborough Public School Sign & Line Plan







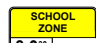

Date 17/12/23
Scale 1:500
Page 2 of 3

Street LHD
Suburb SCARBOROUGH
Drawn NO
Reviewed N/A



All line marking to be installed in accordance with Transport for NSW Delineation Guidelines
All signage to be installed in accordance with AS1742.2



 wollongong city of innovation		Scarborough Public School Sign & Line Plan				Legend		 Existing Pole  45 km/h Advisory Speed (w8-2 45)			
Date	17/12/23	Street	LHD				 Watch for Bicycles (g9-57)	 End School Zone (r4-231n) "60km/h"	 School Zone (r4-230n)	 Reverse Curve (w1-4 (R))	
Scale	1:500	Suburb	SCARBOROUGH								
Page	3 of 3	Drawn	NO	Reviewed	N/A						