

ITEM 7 TENDER T1000173 - MEMORIAL DRIVE (ALBERT STREET) DEBRIS CONTROL STRUCTURE

This report recommends the acceptance of a tender for the construction of a debris control structure in the upper Bellambi Gully main arm, upstream of the Memorial Drive, within the Collins Creek catchment in accordance with the requirements of the Local Government Act 1993 and the Local Government (General) Regulation 2021.

The Collins Creek Catchment area covers 14 square kilometres between Bulli, Woonona and Bellambi and is subject to flash flooding, with flood levels peaking within an hour of the commencement of heavy rainfall. The Collins Creek Floodplain Risk Management Study and Plan recommended the design and construction of a debris control structure in Albert Street, Bellambi. Debris control structures are intended to reduce large scale debris loading and the risk of blockage to downstream culverts, thus reducing the potential for flood damage and reducing the flood impact on downstream properties, infrastructure and roadways.

RECOMMENDATION

- 1 In accordance with Section 178(1)(a) of the Local Government (General) Regulation 2021, Council accept the tender of Select Civil Pty Ltd for Memorial Drive (Albert Street) Debris Control Structure, in the sum of \$537,388.00 including GST.
- 2 Council delegate to the General Manager the authority to finalise and execute the contract and any other documentation required to give effect to this resolution.
- 3 Council grant authority for the use of the Common Seal of Council on the contract and any other documentation, should it be required, to give effect to this resolution.

REPORT AUTHORISATIONS

Report of: Jeremy Morgan, Manager Project Delivery (Acting)
Authorised by: Joanne Page, Director Infrastructure + Works

ATTACHMENTS

- 1 Locality Plans

BACKGROUND

The Collins Creek Floodplain Risk Management Study and Plan (2014) recommended the design and construction of a debris control structure in the upper Bellambi Gully main arm, upstream of Memorial Drive in Albert Street, Bellambi. The following Collins Creek catchment related projects have been included in Council's previous and current Infrastructure Delivery Programs:

- Bellambi Gully Scheme – channel improvement works – under construction.
- Ursula Road flood mitigation scheme:
 - construction completed for Stage 2
 - design is well-progressed for Stage 1 and 3.
- Debris control structures – Gordon Hutton Park, Russell Vale Golf Course, and Brompton Road Bellambi – construction completed.
- Debris control structure – Memorial Drive (Albert Street), Bellambi (subject of this tender).

Debris control structures are constructed to reduce the likelihood of large debris from entering existing culverts and small bridges. These structures reduce the risk of structural damage and therefore reduce the potential for flooding to occur on surrounding properties, roadways and infrastructure during high rainfall events.

Open tenders were invited for this project with submissions closing at 10.00 am on 5 February 2025.

Eight (8) tenders were received, and all tenders have been scrutinised and evaluated by a Tender Evaluation Panel in accordance with Council's Procurement Policies and Procedures and comprising representatives from the Project Delivery, Infrastructure Strategy and Planning and Governance and Customer Service Divisions.

Tenders were reviewed against the following Evaluation criteria and weightings as set out in the request for tender documents as follows:

Mandatory Criteria

- 1 Satisfactory references from referees for previous projects of similar size and scope
- 2 Financial evaluation acceptable to Council which demonstrates the tenderer's financial capacity to undertake the works
- 3 Accredited Workplace Health and Safety Management System

Evaluation Criteria

- 1 Cost to Council – 40%
- 2 Appreciation of scope of works and construction methodology – 20%
- 3 Experience and satisfactory performance in undertaking projects of similar size, scope and risk profile, including staff qualifications and experience – 15%
- 4 Demonstrated strengthening of local economic capacity – 10%
- 5 Proposed sub-contractors – 5%
- 6 Proposed sub-contractors – 5%
- 7 Workplace health and safety management system and environmental management policies and procedures – 5%

The mandatory criteria have been met by the recommended tenderer.

The Tender Evaluation Panel utilised a weighted scoring method for the evaluation of tenders which allocates a numerical score out of 5 in relation to the level of compliance offered by the tenders to each of the evaluation criteria as specified in the tender documentation. The method then applies weightings established prior to opening tenders for each of the evaluation criteria which provides for a total score out of 5 to be calculated for each tender. The tender with the highest total score is considered the offer that best meets the requirements of the contract in providing value to Council. Table 1 below summarises the results of the tender evaluation and the ranking of tenders.

TABLE 1 – SUMMARY OF TENDER ASSESSMENT

Name of Tenderer	Rank
Select Civil Pty Ltd	1
Cadifern Pty Ltd	2
Convil Group Pty Ltd	3
GC Civil Contracting Pty Ltd	4
City Coast Services Pty Ltd	5
Earthbuilt Environmental	6
Infrastructure Renewal Services Pty Ltd	7
Silver Raven Pty Ltd	8

PROPOSAL

The Tender Evaluation Panel recommend acceptance of the tender from Select Civil Pty Ltd to carry out the Memorial Drive (Albert Street) Debris Control Structure in accordance with the scope of works and technical specifications developed for the project.

The recommended tenderer has satisfied the Tender Evaluation Panel that it can undertake the works in accordance with Council's standards and technical specification.

An acceptable financial capability evaluation has been received in relation to the recommended tenderer.

Referees nominated by the recommended tenderer have been contacted by the Tender Evaluation Panel and the panel was satisfied with the responses.

CONSULTATION AND COMMUNICATION

- 1 Members of the Tender Evaluation Panel
- 2 Nominated Referees

PLANNING AND POLICY IMPACT

This report contributes to the delivery of Our Wollongong 2032 Goal 1. It specifically delivers on the following:

Community Strategic Plan 2032		Delivery Program 2022-2026
Strategy		Service
1.3	Increases our resilience to natural disasters and a changing climate to protect life, property and the environment	Stormwater Services

RISK ASSESSMENT

The risk in accepting the recommendation of this report is considered low on the basis that the tender process has complied with Council's Procurement Policies and Procedures and the Local Government Act 1993.

The risk of the project works is considered medium based upon Council's risk assessment matrix and appropriate risk management strategies will be implemented.

The works have been identified as part of the Collins Creek Floodplain Risk Management Study and Plan and were recommended on a cost benefit basis. There are several impacts including safety, financial and reputational risks that should be considered if Council does not undertake the debris control structure works.

SUSTAINABILITY IMPLICATIONS

Economic sustainability implications are considered relevant to the installation of debris control structure to reduce ongoing maintenance costs and potentially reduce likelihood of flood damages.

FINANCIAL IMPLICATIONS

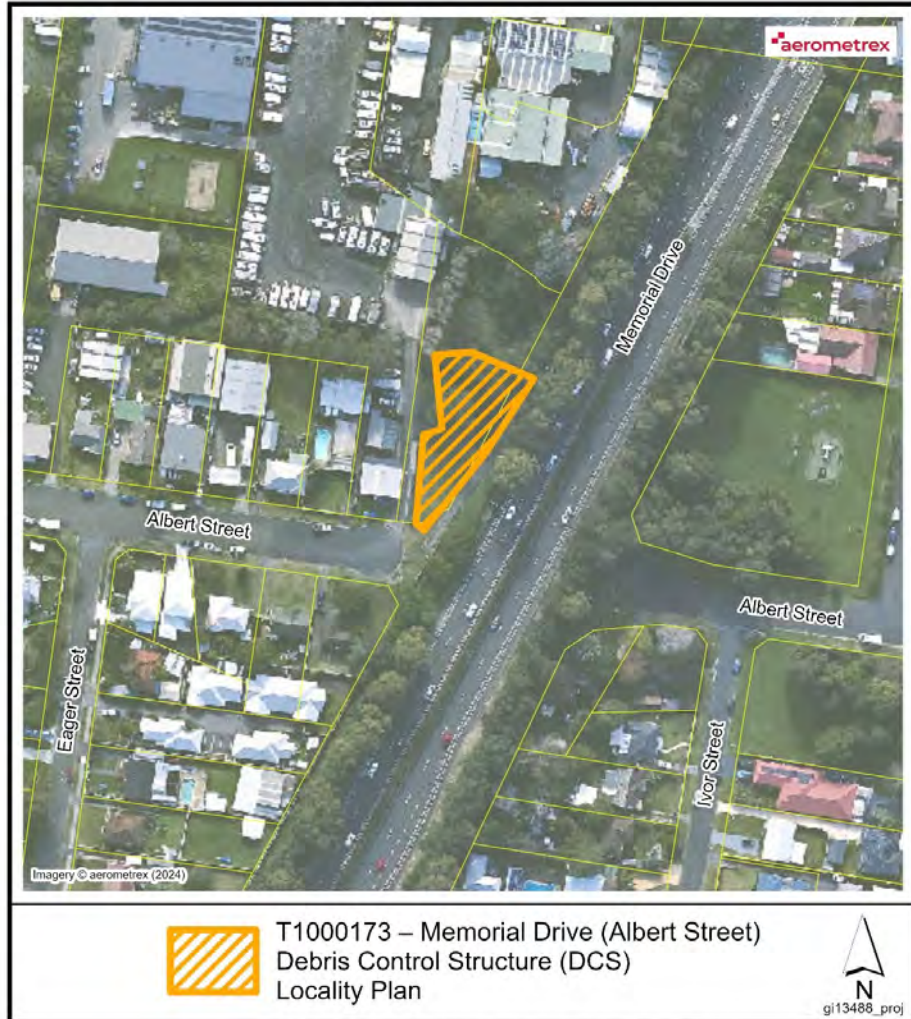
It is proposed that the total project be funded from the following source/s as identified in the Operational Plan –

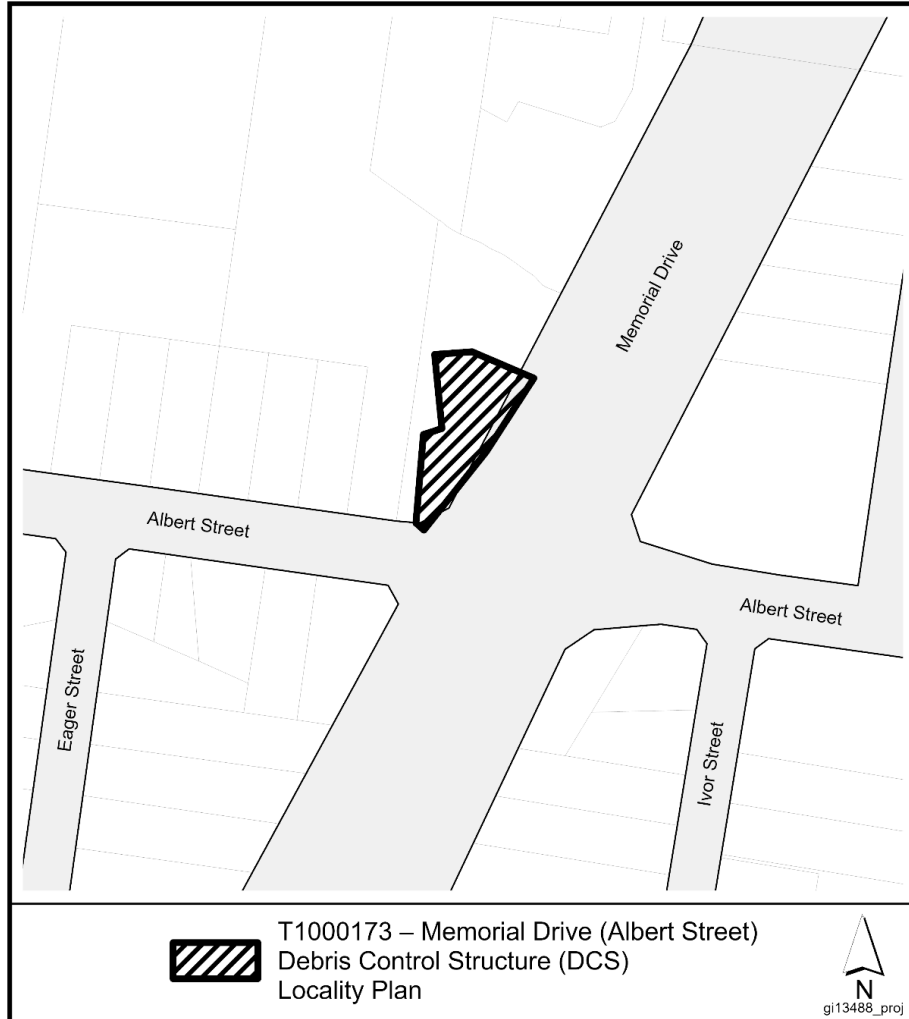
2024/25 Capital Budget

2025/26 Capital Budget

CONCLUSION

The proposed debris control structure at upper Bellambi Gully main arm, upstream of the Memorial Drive is recommended as part of the flood modification options in the Collins Creek Floodplain Risk Management Study and Plan. Select Civil Pty Ltd have provided a satisfactory submission, and it is recommended that Council endorse the recommendations of this report.





While every effort has been made to ensure the highest possible quality of data, no liability will be accepted for any inaccuracy of the information shown.
Copyright © Wollongong City Council, Mapping Services Section. This map may not be reproduced in any form whatever without the express written permission of Wollongong City Council.